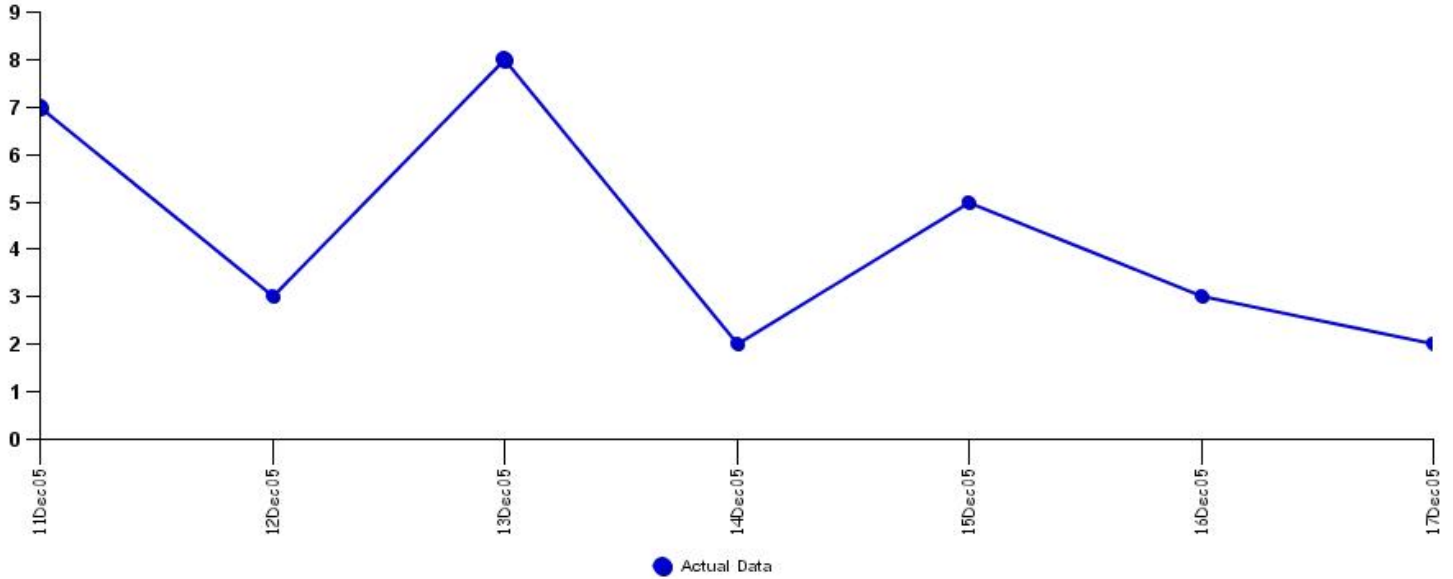


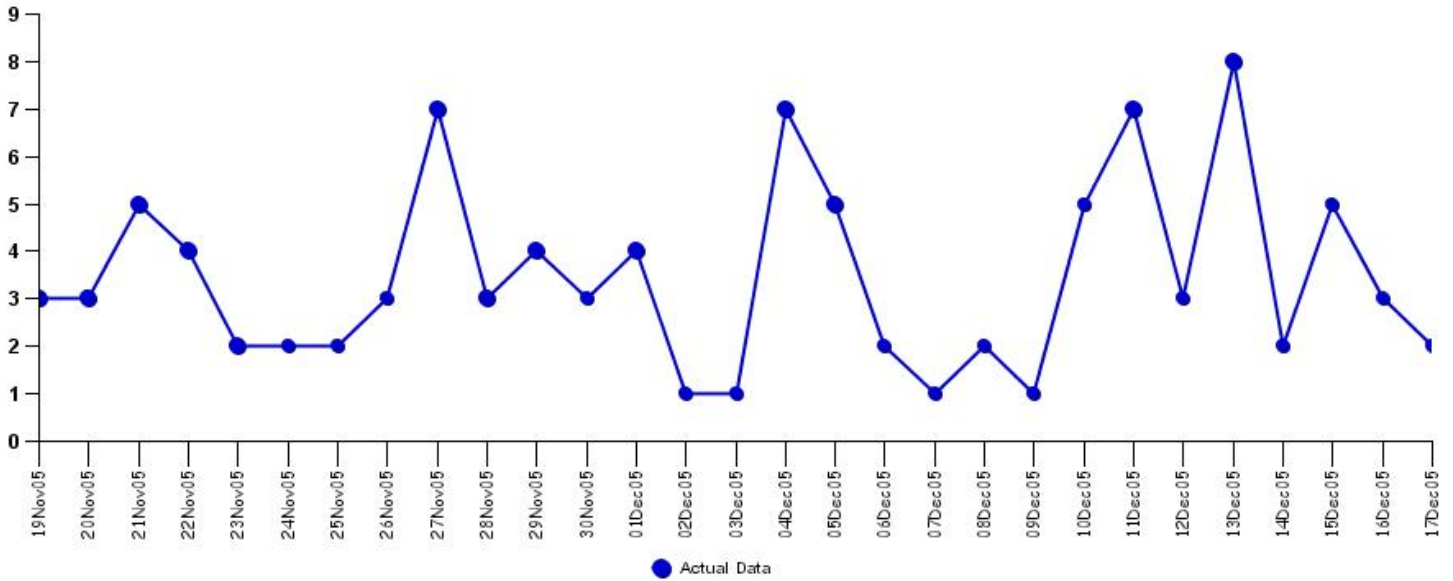
Graph 1 - Weekly Summary

Influenza-Like Illness based on Emergency Department chief complaint 12/11/05 to 12/17/05



Graph 2 - Four-week Summary

Influenza-Like Illness based on Emergency Department chief complaint 11/19/05 to 12/17/05



Graph 3 - Six Month Summary

Influenza-Like Illness based on Emergency Department chief complaint 06/19/05 to 12/17/05

