



**Miami-Dade County Health Department
Epidemiology, Disease Control and Immunization Services
Influenza/Respiratory Illness Surveillance Report
Week 29: 7/19/2009 – 7/25/2009**

Contacts

Erin O'Connell, MPH
Erin_OConnell@doh.state.fl.us

Phone: (305) 470-5660

Report Summary

The Weekly Influenza/Respiratory Illness Surveillance Report includes information from the following data sources:

1. Hospital Emergency Department Surveillance (ESSENCE)
2. Florida Sentinel Physician Influenza Surveillance Network (FSPISN)
3. Outbreak Report

Each reporting week starts on Sunday and ends on Saturday.

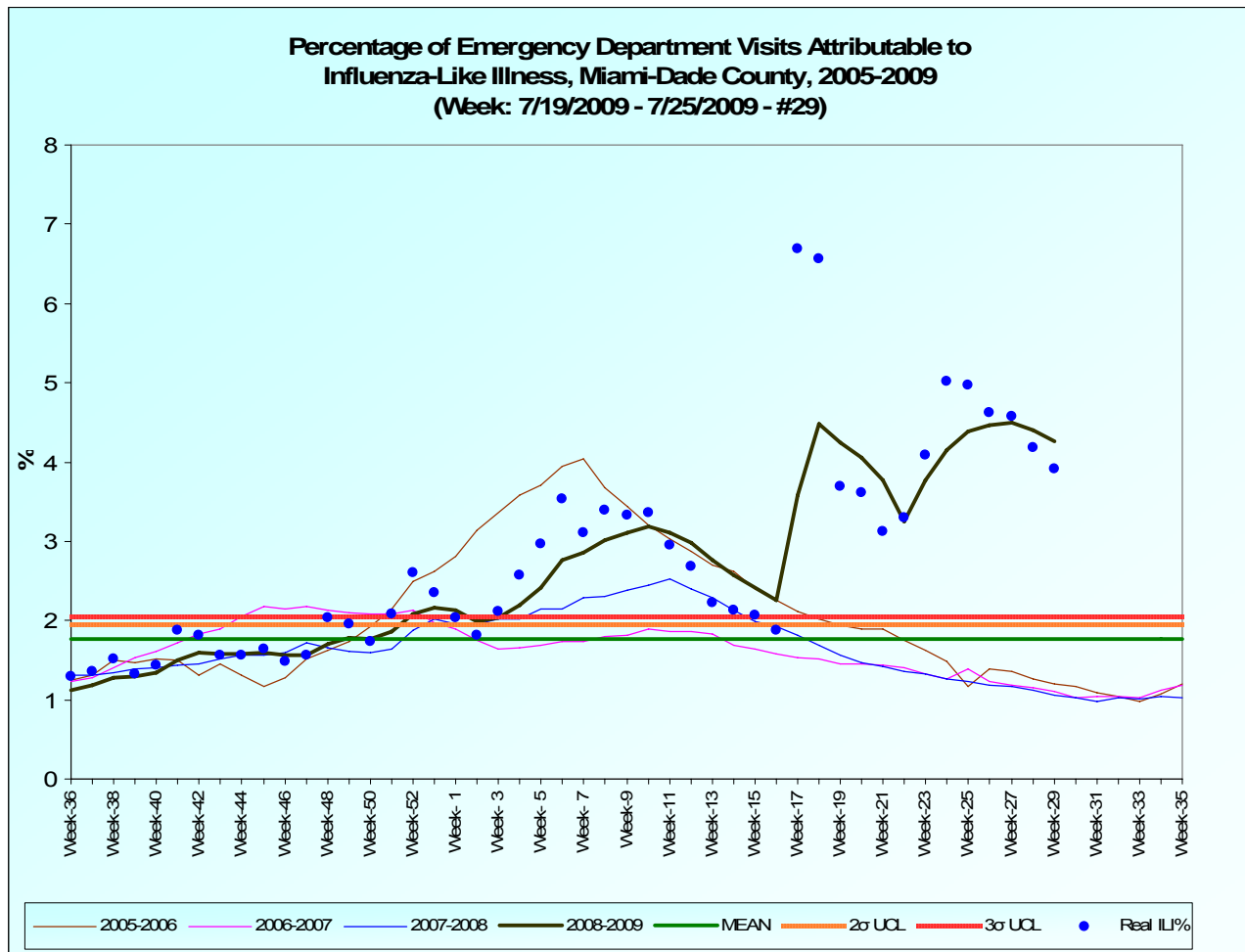
Methods

An exponentially weighted moving average (EWMA) is calculated based on historical data from January 1, 2008 to current data. The thresholds are estimated by EWMA based on last 3 influenza seasons (2005-2006, 2006-2007 and 2007-2008). The Upper Control Limits (UCL) are at 2 and 3 standard deviations above the mean. Increased activity is determined based on a threshold that is 2 standard deviations above the historical mean.

Hospital Emergency Department Surveillance

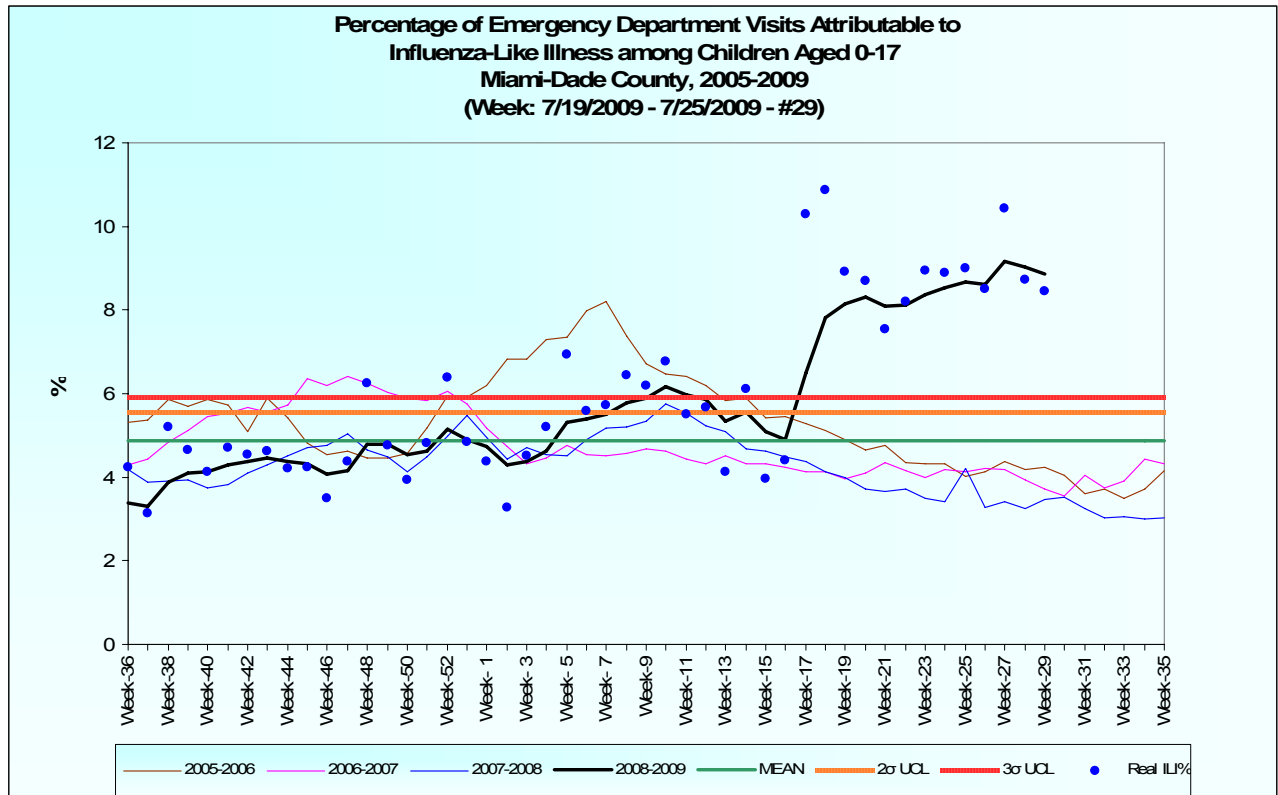
On a daily basis, selected Miami-Dade County hospitals electronically transmit hospital emergency department data to the Miami-Dade County Health Department. This data is then categorized into 10 distinct syndromes. The influenza-like illness (ILI) syndrome consists of fever with either cough or sore throat. It can also include a chief complaint of “flu”. Each week, staff will determine the percentage of all emergency department visits that fall into the ILI category.

Influenza-Like-Illness, All Ages



During this week, influenza-like illness activity decreased though was above the mean. About 3.92% of emergency department visits were attributed to influenza-like illness, compared with 0.98% observed during the same week last influenza season.

Influenza-Like-Illness, Children Aged 0-17



During this week, there was a decrease in influenza-like illness seen among children though the activity level is above the mean. About 8.44% of emergency department visits were attributed to influenza-like illness, compared with 3.22% observed during the same week last influenza season.

Florida Sentinel Physician Influenza Surveillance Network (FSPISN)

An influenza sentinel provider conducts surveillance for Influenza-like illness (ILI) in collaboration with the Florida State Health Department Bureau of Epidemiology and the Centers for Disease Control and Prevention (CDC). Data reported by sentinel providers, in combination with other influenza surveillance data, provides a national picture of influenza virus and ILI activity in the U.S. and Florida. Sentinel providers report the number of patient visits each week and number of patient visits for ILI by age group (0-4 years, 5-24 years, 25-64 years, and 65 and above years) year round. These data are transmitted once a week via the internet or fax to a central database to CDC. CDC recommends that there be 1 sentinel provider for every 250,000 population. Miami-Dade County has 9 participating providers.

Week 28 data –

0 – 4 years	5 – 24 years	25 – 64 years	65 + years	Total ILI	Total patients seen	% ILI	# Providers Reporting
0	0	0	0	0	37	0.0	1 of 9