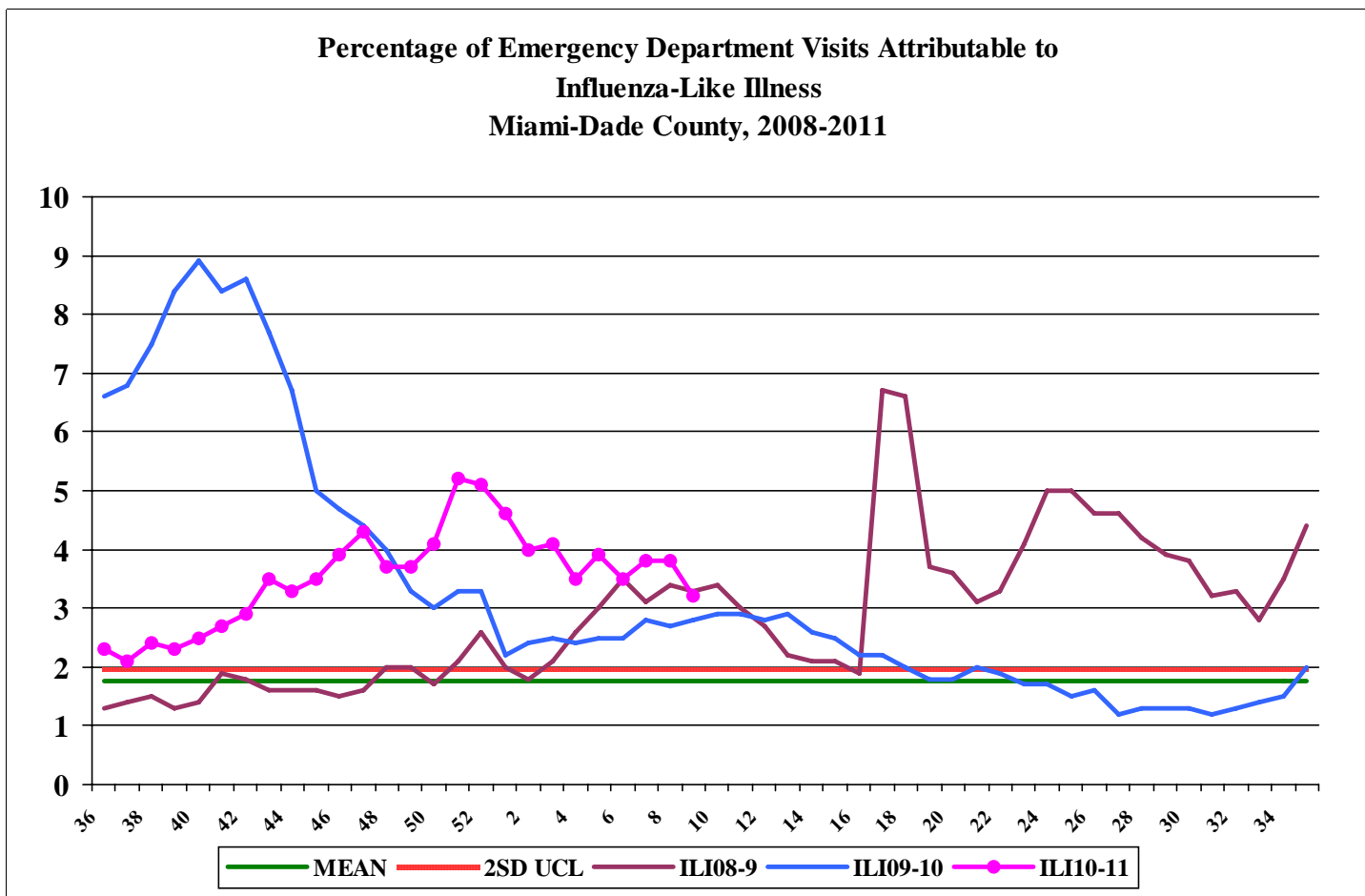


Miami-Dade County Health Department Epidemiology, Disease Control and Immunization Services Influenza Like Illness Surveillance Report

As of 3/5/2011, week 09

On a daily basis, the 17 largest of Miami-Dade County's 23 emergency department (ED) hospitals electronically transmit ED data to the Miami-Dade County Health Department (MDCHD). This data is then categorized into 11 distinct syndromes. The influenza-like illness (ILI) syndrome consists of fever with either cough or sore throat. It can also include a chief complaint of "flu" or "ILI". This season's 2010-2011 data is compared to the previous 2 influenza seasons (2007-2008, 2008-2009). The mean and 2 standard deviations above the mean are displayed. Increased activity is determined based on a threshold that is 2 standard deviations above the historical mean.

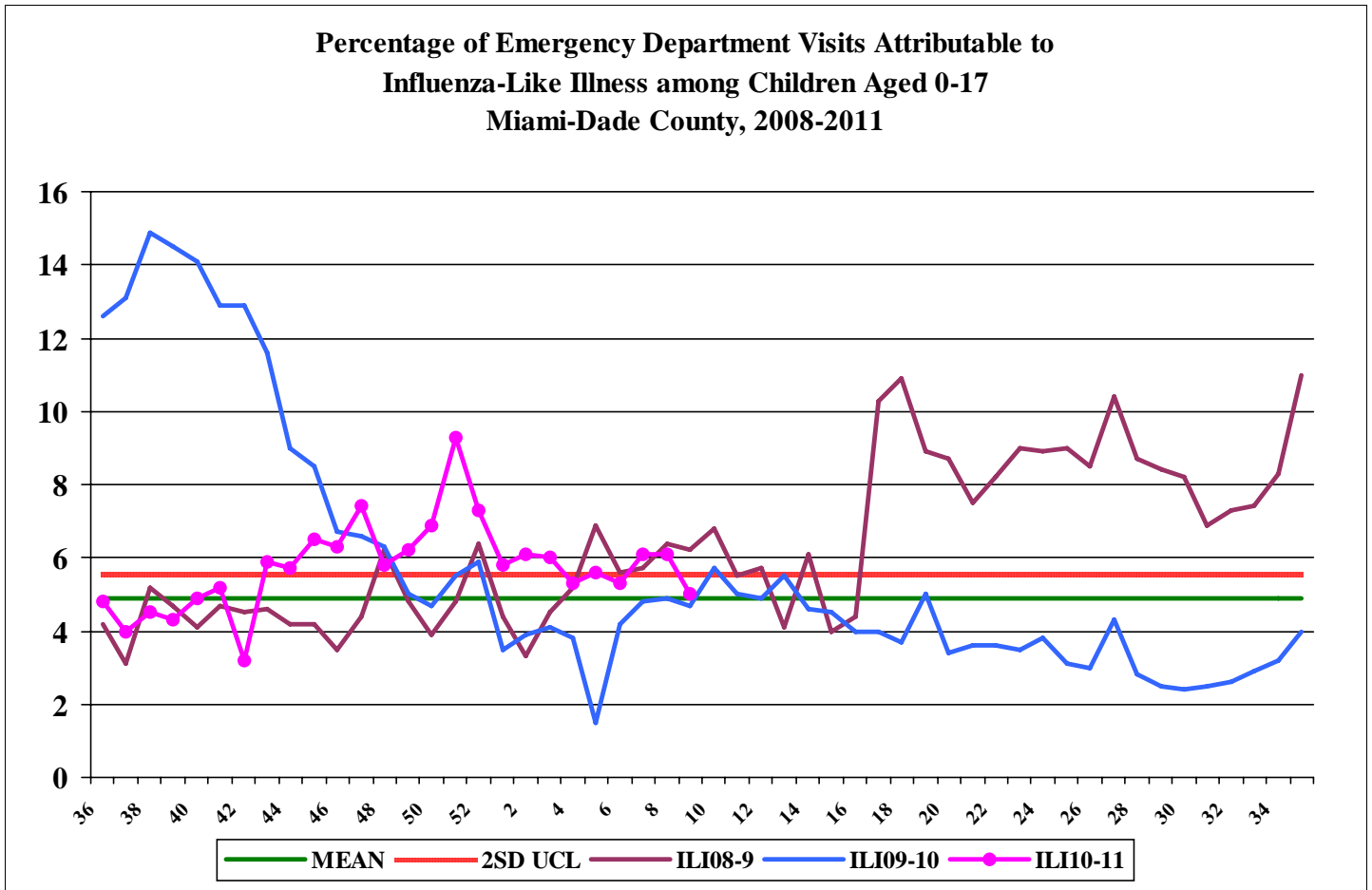
Influenza-Like-Illness, All Age



During this period, there were 21,870 ED visits; among them 688 (3.2%) were ILI. At the same week of last year, 2.8% of ED visits were ILI.

**Miami-Dade County Health Department Epidemiology, Disease Control and
Immunization Services Influenza Like Illness Surveillance Report
As of 3/5/2011, week 09**

Influenza-Like-Illness, Children Aged 0-17



During this period, there were 8,045 ED visits; among them 402 (5.0%) were ILI. At the same week of last year, 4.7% of ED visits were ILI.