

**Section 5: Sexually Transmitted Diseases**

**Table 5-1. Reported Sexually Transmitted Diseases by Sex, Miami-Dade County, 1997-2002**

Diseases/Year	Total		Males		Females		UNK**
	Cases	Rate*	Cases	Rate*	Cases	Rate*	
<b>Primary &amp; Secondary Syphilis</b>							
1997	54	2.6	35	3.5	19	1.8	
1998	31	1.5	20	2.0	11	1.0	
1999	83	3.9	59	5.7	24	2.2	
2000	131	5.8	90	8.3	41	3.5	
2001	187	8.3	147	13.3	40	3.4	
2002	232	10.0	198	17.7	34	2.8	
<b>Early Latent Syphilis</b>							
1997	418	20.2	222	22.2	196	18.3	
1998	242	11.6	127	12.6	115	10.6	
1999	295	13.9	171	16.6	123	11.2	1
2000	340	15.1	187	17.2	153	13.1	
2001	224	9.9	146	13.2	77	6.5	1
2002	301	13.0	208	18.6	93	7.8	
<b>Late Latent Syphilis</b>							
1997	371	17.9	179	17.9	192	17.9	
1998	463	22.1	230	22.8	233	21.6	
1999	369	17.4	209	20.3	160	14.6	
2000	342	15.2	189	17.4	153	13.1	
2001	165	7.3	108	9.8	57	4.8	
2002	145	6.3	91	8.1	45	3.8	
<b>Chlamydia</b>							
1997	3579	172.9	689	68.9	2884	269.3	6
1998	3486	166.8	685	67.8	2799	259.1	2
1999	4083	192.0	723	70.3	3349	305.0	11
2000	3010	133.6	596	54.7	2414	207.4	
2001	3902	172.7	791	71.6	3110	263.4	1
2002	4639	200.2	903	80.6	3736	312.5	
<b>Gonorrhea</b>							
1997	2168	104.7	1179	117.9	987	92.2	2
1998	2573	123.1	1518	150.3	1053	97.5	2
1999	2806	131.9	1650	160.4	1152	104.9	4
2000	1994	88.5	1263	116.0	731	62.8	
2001	1990	88.1	1213	109.8	776	65.7	1
2002	1976	85.3	1173	104.6	803	67.2	

Note: \*Rate: per 100,000 population

\*\* UNK: unknown sex

Section 5: Sexually Transmitted Diseases

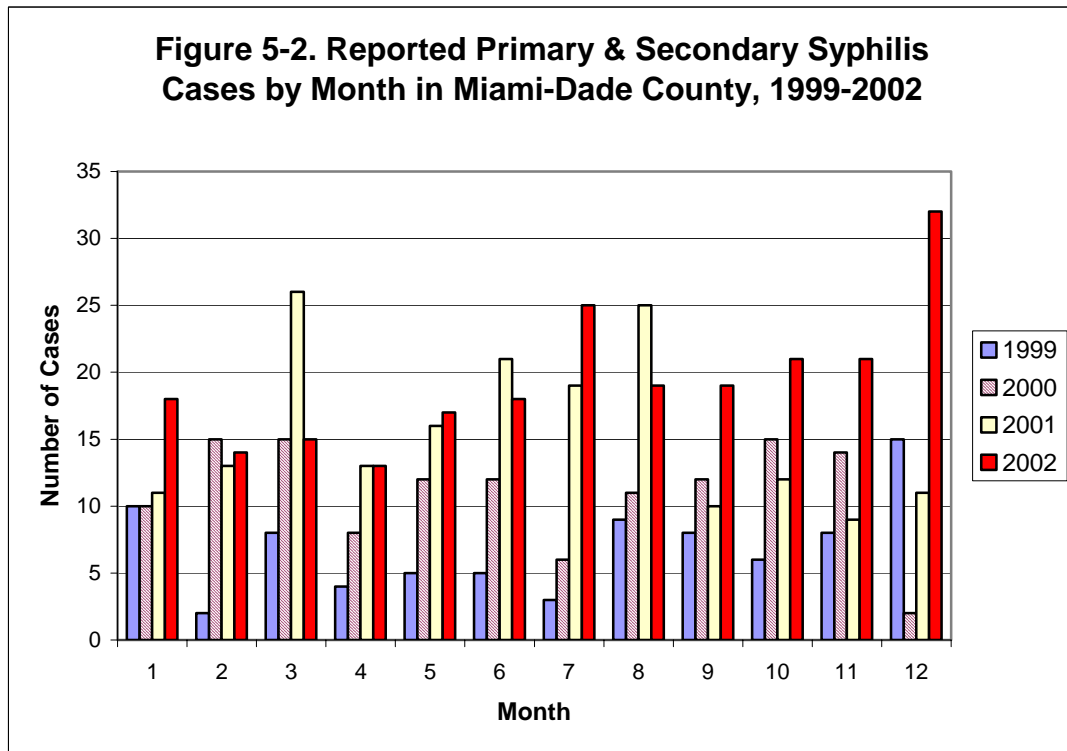
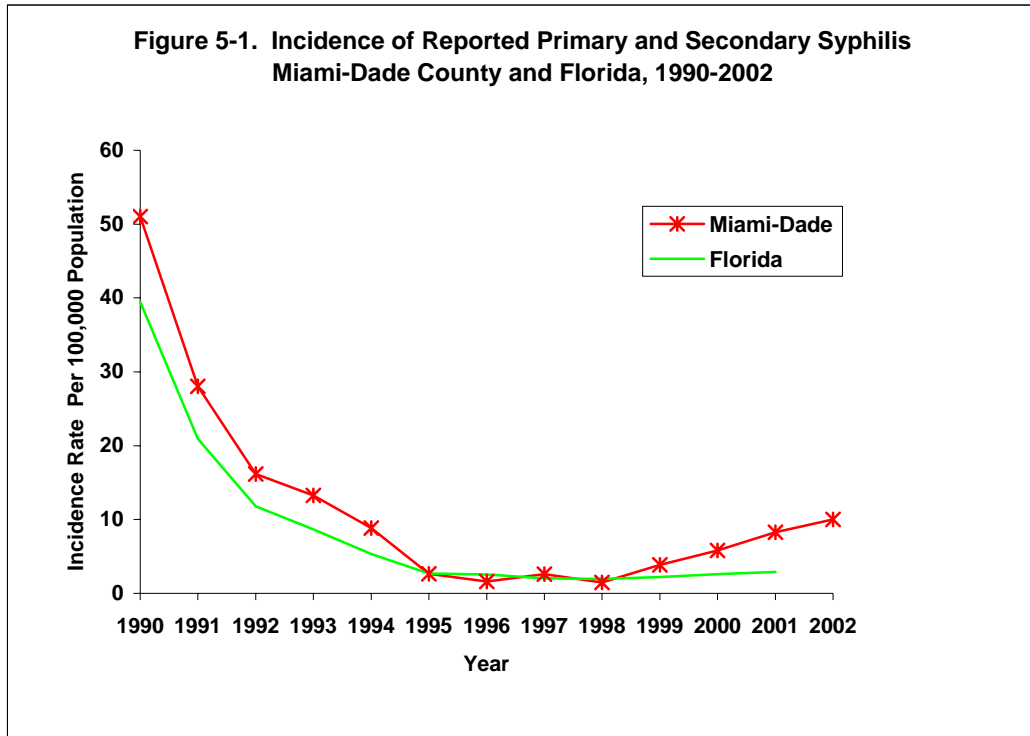
**Table 5-2. Reported Syphilis Cases by Sex and Age Group, Miami-Dade County, 1999-2002**

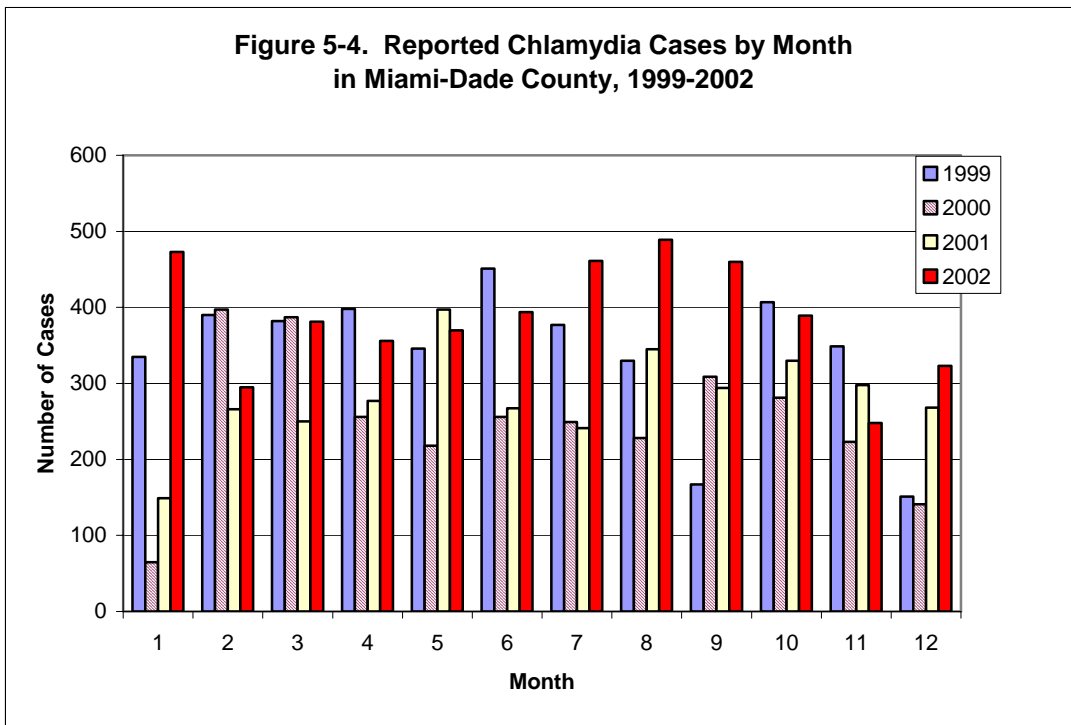
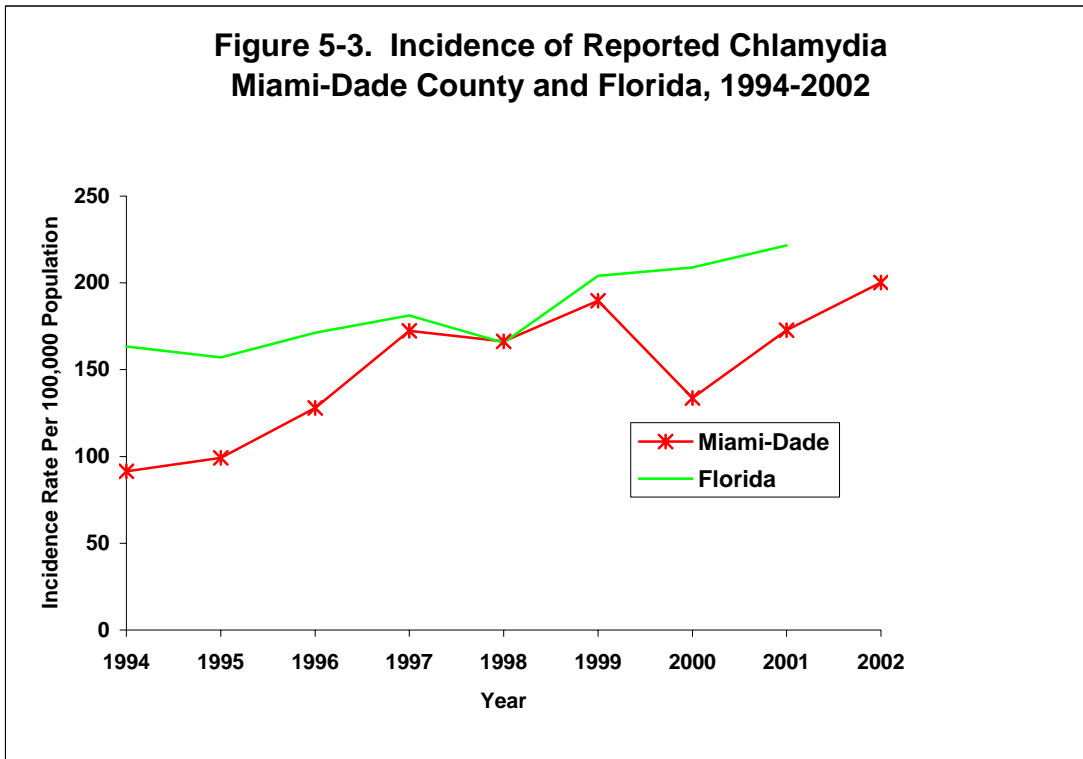
Diseases	Age Group (yrs.)	1999		2000		2001		2002	
		Number	Percent	Number	Percent	Number	Percent	Number	Percent
<b>Primary &amp; Secondary Syphilis</b>									
Both Sexes	<20	8	9.6	8	6.1	9	4.8	7	3.0
	20-29	24	28.9	26	19.7	46	24.7	44	19.0
	30-39	23	27.7	49	37.1	68	36.6	96	41.4
	40+	28	33.7	49	37.1	63	33.9	85	36.6
	All	83	100.0	132	100.0	186	100.0	232	100.0
Male	<20	4	6.8	3	3.3	4	2.7	4	2.0
	20-29	17	28.8	12	13.3	34	23.3	33	16.7
	30-39	16	27.1	34	37.8	54	37.0	87	43.9
	40+	22	37.3	41	45.6	54	37.0	74	37.4
	All	59	100.0	90	100.0	146	100.0	198	100.0
Female	<20	4	16.7	5	11.9	5	12.5	3	8.8
	20-29	7	29.2	14	33.3	12	30.0	11	32.4
	30-39	7	29.2	15	35.7	14	35.0	9	26.5
	40+	6	25.0	8	19.0	9	22.5	11	32.4
	All	24	100.0	42	100.0	40	100.0	34	100.0
<b>Early Latent Syphilis</b>									
Both Sexes	<20	22	7.5	27	7.9	9	3.9	9	3.0
	20-29	65	22.0	94	27.6	77	33.0	76	25.2
	30-39	101	34.2	114	33.5	81	34.8	102	33.9
	40+	106	35.9	105	30.9	66	28.3	114	37.9
	Unknown	1	0.3						
	All	295	100.0	340	100.0	233	100.0	301	100.0
Male	<20	8	4.7	4	2.1	3	2.0	1	0.5
	20-29	26	15.2	44	23.5	38	25.0	44	21.2
	30-39	60	35.1	63	33.7	60	39.5	79	38.0
	40+	76	44.4	76	40.6	51	33.6	84	40.4
	Unknown	1	0.6						
	All	171	100.0	187	100.0	152	100.0	208	100.0
Female	<20	14	11.4	23	15.0	6	7.5	8	8.6
	20-29	39	31.7	50	32.7	38	47.5	32	34.4
	30-39	40	32.5	51	33.3	21	26.3	23	24.7
	40+	30	24.4	29	19.0	15	18.8	30	32.3
	All	123	100.0	153	100.0	80	100.0	93	100.0

**Section 5: Sexually Transmitted Diseases**

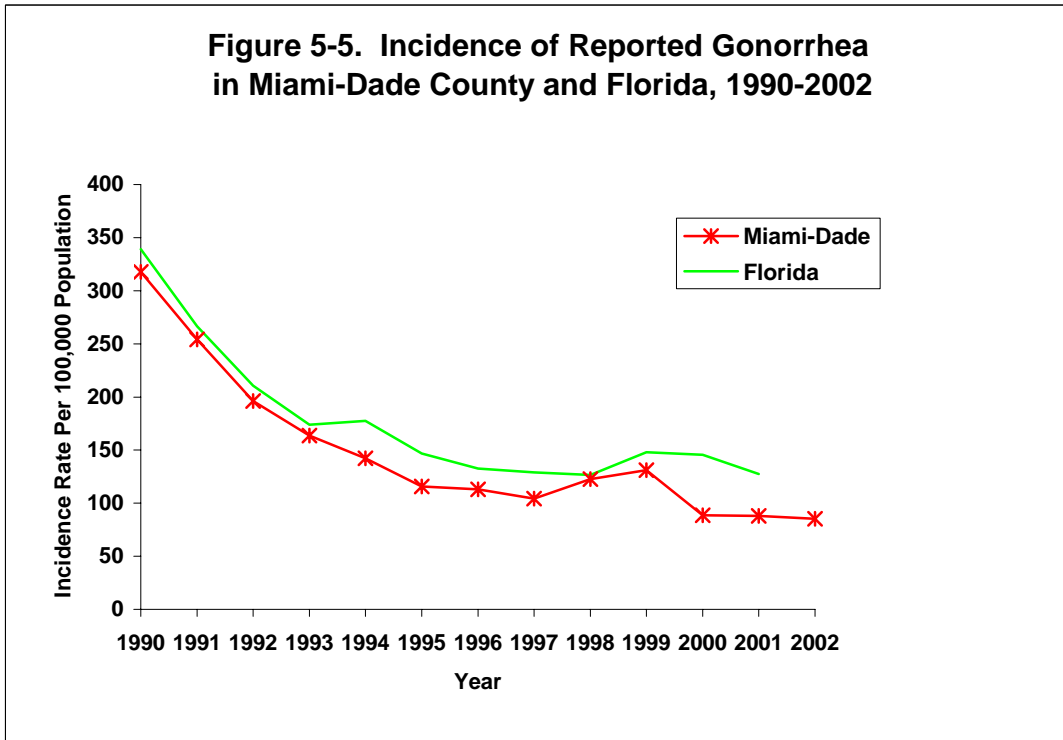
**Table 5-3. Reported Syphilis Cases by Sex and Race/Ethnicity, Miami-Dade County, 1999-2002**

Diseases	Race/Ethnicity	1999		2000		2001		2002	
		Number	Percent	Number	Percent	Number	Percent	Number	Percent
<b>Primary &amp; Secondary Syphilis</b>									
Both Sexes	Non-Hispanic White	10	12.0	17	12.9	25	13.4	31	13.4
	Non-Hispanic Black	39	47.0	65	49.2	85	45.7	73	31.5
	Hispanic	20	24.1	35	26.5	59	31.7	106	45.7
	Non-Hispanic Other	1	1.2	1	0.8				
	Unknown	13	15.7	14	10.6	17	9.1	22	9.5
	All	83	100.0	132	100.0	186	100.0	232	100.0
Male	Non-Hispanic White	6	10.2	11	12.2	22	15.1	30	15.2
	Non-Hispanic Black	28	47.5	38	42.2	55	37.7	53	26.8
	Hispanic	14	23.7	30	33.3	54	37.0	95	48.0
	Non-Hispanic Other	1	1.7	1	1.1				
	Unknown	10	16.9	10	11.1	15	10.3	20	10.1
	All	59	100.0	90	100.0	146	100.0	198	100.0
Female	Non-Hispanic White	4	16.7	6	14.3	3	7.5	1	2.9
	Non-Hispanic Black	11	45.8	27	64.3	30	75.0	20	58.8
	Hispanic	6	25.0	5	11.9	5	12.5	11	32.4
	Unknown	3	12.5	4	9.5	2	5.0	2	5.9
	All	24	100.0	42	100.0	40	100.0	34	100.0
<b>Early Latent Syphilis</b>									
Both Sexes	Non-Hispanic White	30	10.2	30	8.8	25	10.7	43	14.3
	Non-Hispanic Black	141	47.8	160	47.1	96	41.2	108	35.9
	Hispanic	64	21.7	87	25.6	92	39.5	111	36.9
	Non-Hispanic Other	7	2.4	2	0.6			1	0.3
	Unknown	53	18.0	61	17.9	20	8.6	38	12.6
	All	295	100.0	340	100.0	233	100.0	301	100.0
Male	Non-Hispanic White	19	11.1	15	8.0	21	13.8	36	17.3
	Non-Hispanic Black	74	43.3	80	42.8	51	33.6	59	28.4
	Hispanic	38	22.2	53	28.3	62	40.8	83	39.9
	Non-Hispanic Other	4	2.3	2	1.1			1	0.5
	Unknown	36	21.1	37	19.8	18	11.8	29	13.9
	All	171	100.0	187	100.0	152	100.0	208	100.0
Female	Non-Hispanic White	11	8.9	15	9.8	4	5.0	7	7.5
	Non-Hispanic Black	67	54.5	80	52.3	45	56.3	49	52.7
	Hispanic	26	21.1	34	22.2	30	37.5	28	30.1
	Non-Hispanic Other	3	2.4						
	Unknown	16	13.0	24	15.7	1	1.3	9	9.7
	All	123	100.0	153	100.0	80	100.0	93	100.0

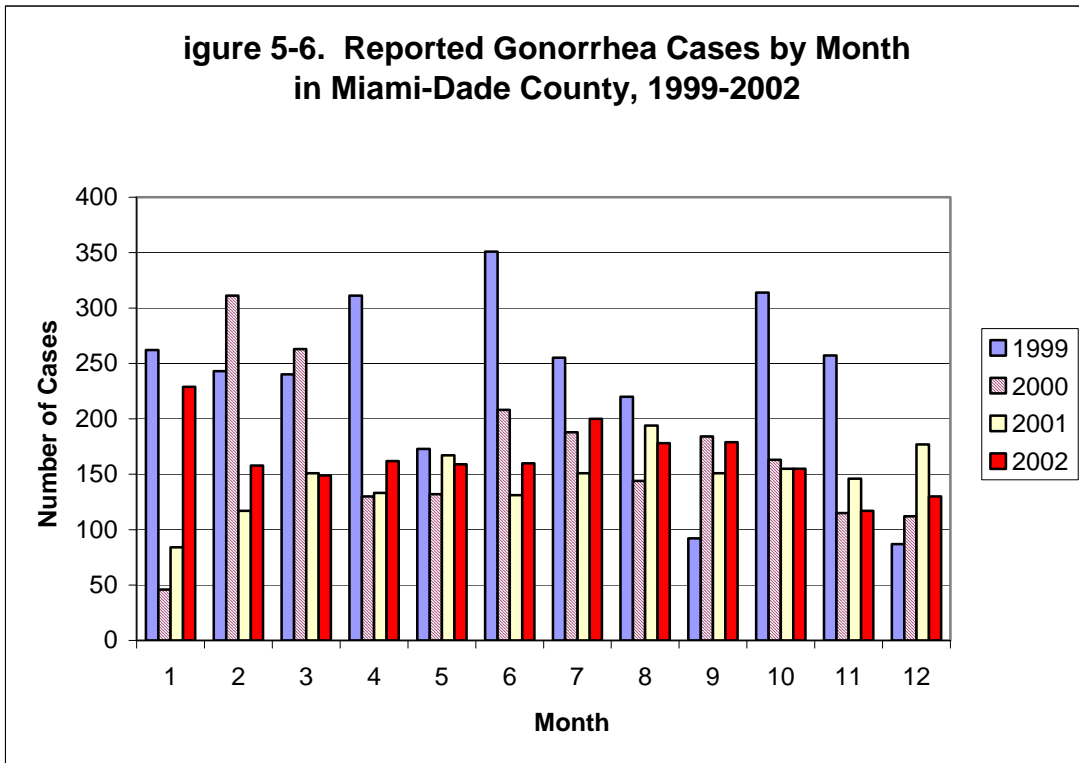




**Figure 5-5. Incidence of Reported Gonorrhea in Miami-Dade County and Florida, 1990-2002**



**Figure 5-6. Reported Gonorrhea Cases by Month in Miami-Dade County, 1999-2002**



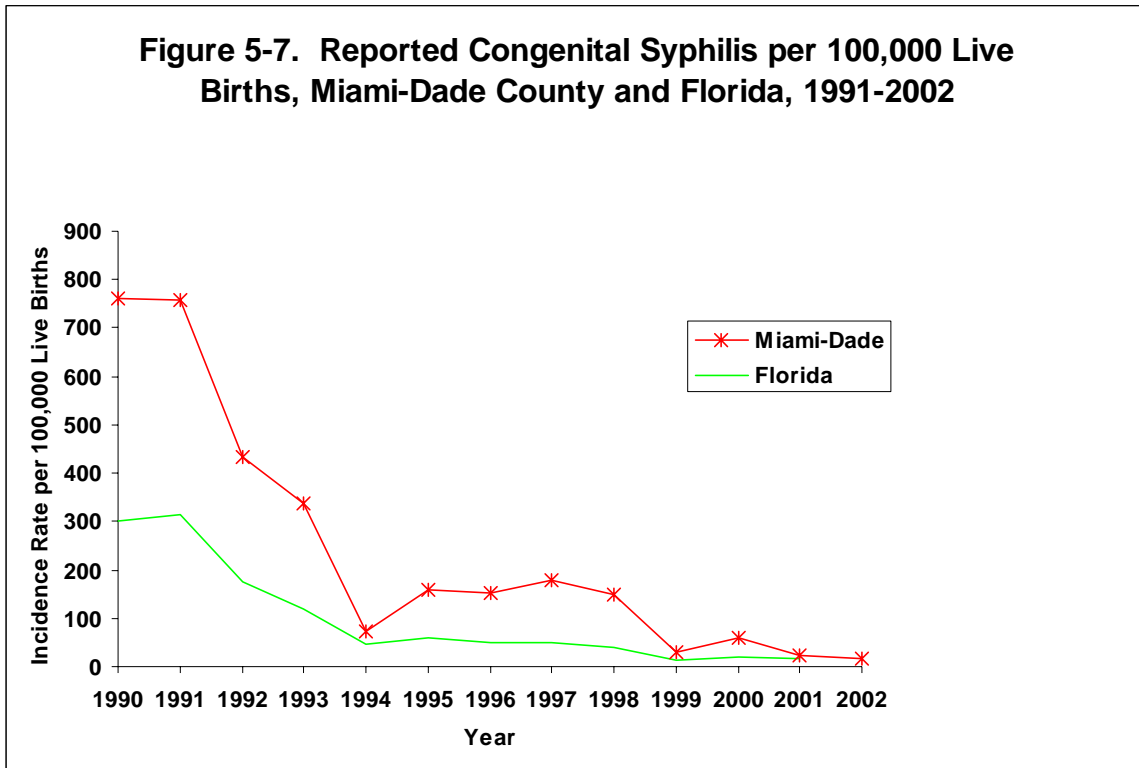
Section 5: Sexually Transmitted Diseases

**Table 5-4. Reported Cases of Congenital Syphilis\* by Mother's Race/Ethnicity, Initiation of Prenatal Care, Marital Status, and Infant's Birthweight, Gestational Age  
Miami-Dade County, 1997-2002**

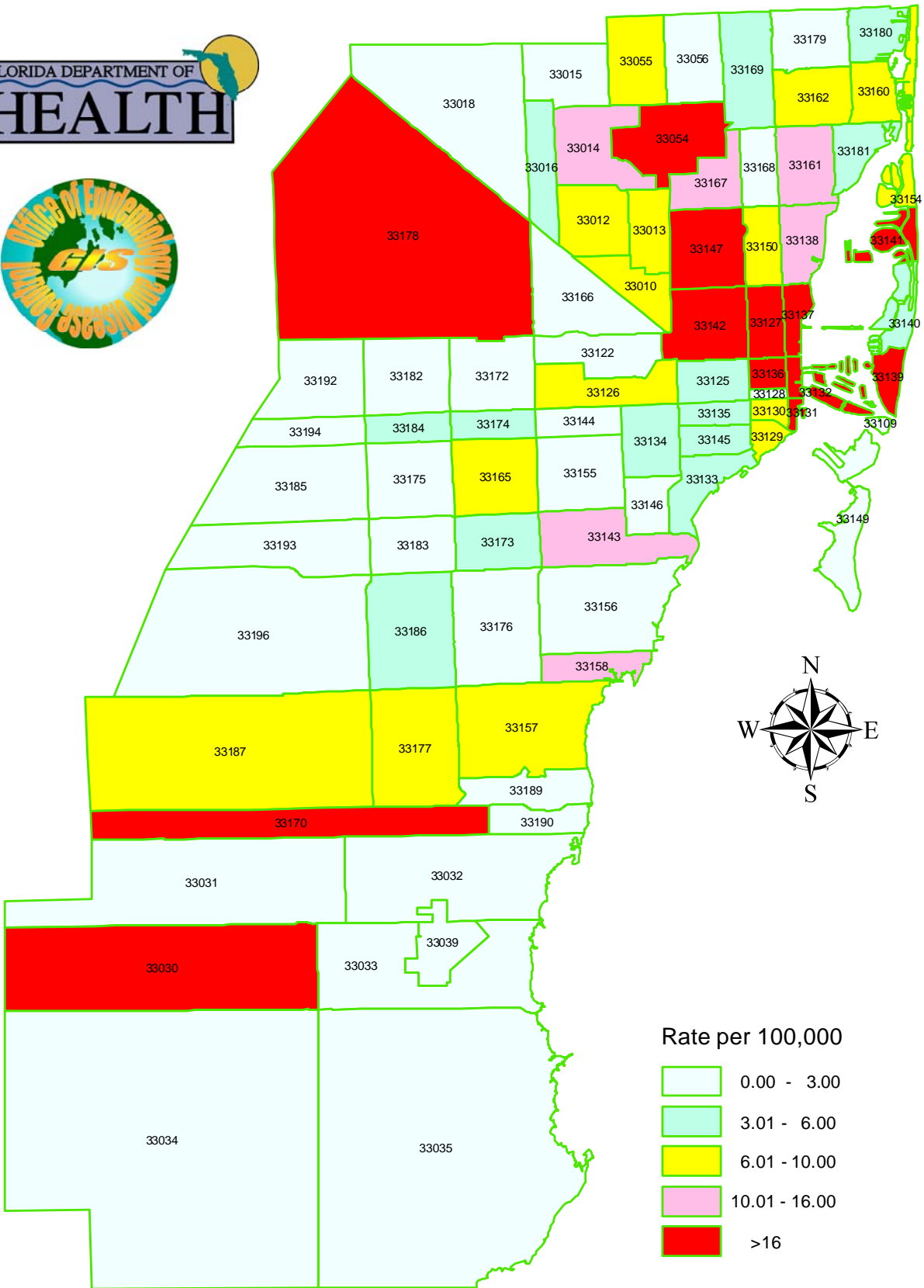
Characteristics	1997		1998		1999		2000		2001		2002	
	Cases	Percent	Cases	Percent	Cases	Percent	Cases	Percent	Cases	Percent	Cases	Percent
<b>Race/Ethnicity of Mother</b>												
Non-Hispanic White	2	3.6	1	2.0	0	0.0	0	0.0	0	0.0	0	0.0
Non-Hispanic Black	27	49.1	27	55.1	6	66.6	8	42.1	6	60.0	4	80.0
Hispanic	26	47.3	19	38.8	2	33.3	7	36.8	4	40.0	1	20.0
Others	0	0.0	2	4.1	0	0.0	0	0.0	0	0.0	0	0.0
Unknown	0	0.0	0	0.0	1	0.0	4	21.1	0	0.0	0	0.0
<b>Prenatal Care</b>												
1st Trimester	16	29.1	15	30.6	2	22.2	2	10.5	4	40.0	0	0.0
2nd Trimester	12	21.8	18	36.7	2	11.1	8	42.1	1	10.0	2	40.0
Late/No Care/Unknown	27	49.1	16	32.7	6	66.6	9	47.4	5	50.0	3	60.0
<b>Marital Status</b>												
Wed	33	60.0	35	71.4	2	11.1	0	0.0	2	20.0	1	20.0
Unwed	22	40.0	14	28.6	7	88.8	18	94.7	8	8.0	4	80.0
Unknown	0	0.0	0	0.0	0	0.0	1	5.3	0	0.0	0	0.0
<b>Birthweight</b>												
<2500 Grams	17	30.9	12	24.5	3	33.3	7	36.8	0	0.0	2	40.0
≥2500 Grams	38	69.1	37	75.5	6	66.6	11	57.9	9	90.0	2	40.0
Unknown	0	0.0	0	0.0	0	0.0	1	5.3	1	10.0	1	20.0
<b>Gestational Age (Weeks)</b>												
<37 Weeks	17	30.9	11	22.5	3	33.3	11	57.9	1	10.0	3	60.0
≥37 Weeks	38	69.1	38	77.6	6	66.6	8	42.1	9	90.0	2	40.0

\*:These results in the table included presumptive cases.

**Figure 5-7. Reported Congenital Syphilis per 100,000 Live Births, Miami-Dade County and Florida, 1991-2002**



# Incidence of Primary and Secondary Syphilis Miami-Dade County, 2002 (Countywide=10.0)





Section 5: Sexually Transmitted Diseases

# Incidence of Gonorrhea

## Miami-Dade County, 2002 (Countywide=85.3)

