

Section 4: Tuberculosis

**Table 4-1. Reported Tuberculosis Cases and Rates (per 100,000 population)
Miami-Dade County, Florida and United States, 1993-2001**

Year	Miami-Dade		Florida		USA	
	Cases	Rate	Cases	Rate	Cases	Rate
1993	403	19.9	1655	12.1	25287	9.8
1994	416	19.8	1762	12.6	24361	9.4
1995	379	18.3	1556	11.0	22860	8.7
1996	318	14.6	1417	9.8	21337	8.0
1997	299	14.4	1400	9.6	19851	7.4
1998	286	13.7	1304	8.7	18361	6.8
1999	273	12.9	1281	8.3	17531	6.4
2000	278	12.4	1171	7.5	16377	5.8
2001	291	12.7	1145	7.0	15989	5.6

**Table 4-2. Reported Tuberculosis Cases by Sex
Miami-Dade County, Florida and United States, 1993-2001**

Year	Miami-Dade				Florida				USA			
	Male		Female		Male		Female		Male		Female	
	Cases	Percent	Cases	Percent	Cases	Percent	Cases	Percent	Cases	Percent	Cases	Percent
1993	272	67.5	131	32.5	1,177	71.1	478	28.9	16,423	64.9	8,864	35.1
1994	305	73.1	112	26.9	1,229	70.3	519	29.7	15,833	65.0	8,528	35.0
1995	262	69.1	117	30.9	1,041	67.0	513	33.0	14,502	63.4	8,356	36.6
1996	206	64.8	112	35.2	962	68.2	449	31.8	13,560	63.6	7,765	36.4
1997	198	66.2	101	33.8	931	66.5	469	33.5	12,371	62.3	7,474	37.7
1998	181	63.3	105	36.7	901	69.4	397	30.6	11,413	62.2	6,935	37.8
1999	184	67.4	89	32.6	852	66.5	429	33.5	10,948	62.4	6,583	37.6
2000	200	71.9	78	28.1	803	68.9	362	31.1	10,225	62.4	6,148	37.5
2001	195	67.0	96	33.0	782	68.3	363	31.7	9,943	62.2	6,045	37.8

(1) 12 cases' sex were unknown in Miami-Dade, 1996

(2) 6 cases' sex were unknown in USA, 1997

(3) 10 cases' sex were unknown in USA, 1998

(4) 1 case's sex was unknown in USA, 2001

Table 4-3. Reported Tuberculosis Cases by Race/Ethnicity, Miami-Dade County, Florida and United States, 1994-2001

	Non-Hispanic White		Non-Hispanic Black		Hispanic		American Indian		Asian		Unknown	Total
	Cases	Percent	Cases	Percent	Cases	Percent	Cases	Percent	Cases	Percent		
Miami-Dade												
1994	64	15.38	230	55.29	104	25.00	0	0.00	0	0.00	18	416
1995	45	11.87	212	55.94	118	31.13	0	0.00	0	0.00	4	379
1996	31	9.75	165	51.89	116	36.48	0	0.00	6	1.89	0	318
1997	32	10.70	150	50.17	109	36.45	0	0.00	8	2.68	0	299
1998	25	8.74	161	56.29	94	32.87	0	0.00	6	2.10	0	286
1999	32	11.72	132	48.35	97	35.53	0	0.00	12	4.40	0	273
2000	32	11.51	151	54.32	88	31.65	0	0.00	7	2.52	0	278
2001	21	7.22	150	51.55	110	37.80	1	0.34	9	3.09	0	291
Florida												
1994	546	30.99	835	47.39	296	16.80	7	0.40	39	2.21	39	1762
1995	442	28.41	795	51.09	261	16.77	6	0.39	45	2.89	7	1556
1996	454	32.04	690	48.69	210	14.82	1	0.07	62	4.38	0	1417
1997	418	29.86	692	49.43	214	15.29	2	0.14	73	5.21	1	1400
1998	395	30.34	642	49.31	200	15.36	3	0.23	57	4.38	5	1302
1999	517	40.36	621	48.48	207	16.16	0	0.00	74	5.78	2	1281
2000	292	25.06	591	50.73	218	18.71	2	0.17	62	5.32	0	1165
2001	289	25.24	533	46.55	239	20.87	2	0.17	82	7.16	0	1145
United States												
1994	6494	26.66	8345	34.26	5074	20.83	332	1.36	3821	15.68	295	24361
1995	5989	26.20	7555	33.05	4847	21.20	319	1.40	3997	17.48	153	22860
1996	5506	25.80	7106	33.30	4533	21.24	284	1.33	3814	17.88	94	21337
1997	4872	24.54	6610	33.30	4228	21.30	264	1.33	3833	19.31	44	19851
1998	4495	24.48	5831	31.76	4099	22.32	253	1.38	3623	19.73	60	18361
1999	4224	24.09	5552	31.67	3875	22.10	240	1.37	3591	20.48	49	17531
2000	3674	22.00	5161	32.00	3805	23.00	236	1.00	3451	21.00	50	16377
2001	3357	21.00	4796	30.00	4001	25.02	233	1.46	3552	22.22	50	15989

**Table 4-4. Reported Tuberculosis Cases by Country of Origin
Miami-Dade County, Florida, and United States, 1994-2001**

Year	Miami-Dade						Florida						United States					
	USA		Foreign Born		UNK*	Total	USA		Foreign Born		UNK*	Total	USA		Foreign Born		UNK*	Total
	Cases	Percent	Cases	Percent	Cases	Cases	Cases	Percent	Cases	Percent	Cases	Cases	Cases	Percent	Cases	Percent	Cases	Cases
1994	195	46.8	187	44.8	35	417	1310	74.3	410	23.3	42	1762	16278	66.8	7627	31.3	456	24361
1995	158	41.7	221	58.3	0	379	1133	72.8	419	26.9	4	1556	14772	64.6	7930	34.7	158	22860
1996	138	43.4	180	56.6	0	318	1025	72.3	390	27.5	2	1417	13333	62.5	7704	36.1	300	21337
1997	103	34.4	194	64.9	2	299	988	70.6	408	29.1	4	1400	11898	59.9	7702	38.8	251	19851
1998	110	38.5	176	61.5	0	286	901	69.2	397	30.5	4	1302	10675	58.1	7591	41.3	95	18361
1999	107	39.2	166	60.8	0	273	826	64.5	454	35.4	1	1281	9809	56.0	7553	43.1	169	17531
2000	96	34.5	181	65.1	1	278	700	60.1	463	39.7	2	1165	8714	53.2	7554	46.1	109	16377
2001	107	36.8	182	62.5	2	291	672	58.7	471	41.1	2	1143	7845	49.1	7865	49.2	279	15989

*UNK: Unknown

Table 4-5. Reported Tuberculosis Cases by Age Group in Miami-Dade County, Florida, and United States, 1994-2001

Aare	Year	< 5		5 - 14		15 - 24		25 - 44		45 - 64		65+		Unknown	Total
		Cases	Percent	Cases	Percent	Cases	Percent	Cases	Percent	Cases	Percent	Cases	Percent		
Miami-Dade	1994	4	0.96	3	0.72	19	4.57	188	45.19	138	33.17	64	15.38	0	416
	1995	3	0.79	1	0.26	20	5.28	174	45.91	116	30.61	65	17.15	0	379
	1996	5	1.57	3	0.94	16	5.03	158	49.69	93	29.25	43	13.52	0	318
	1997	3	1.00	1	0.33	13	4.35	132	44.15	95	31.77	55	18.39	0	299
	1998	1	0.35	1	0.35	16	5.59	130	45.45	95	33.22	43	15.03	0	286
	1999	4	1.47	1	0.37	9	3.30	135	49.45	89	32.60	35	12.82	0	273
	2000	4	1.43	3	1.08	18	6.48	115	41.36	95	34.16	43	11.88	0	278
	2001	10	3.44	11	3.78	20	6.88	115	39.52	97	33.32	38	13.05	0	291
Florida	1994	50	2.84	23	1.31	100	5.68	722	40.98	518	29.40	346	19.64	3	1762
	1995	37	2.38	22	1.41	77	4.95	648	41.65	478	30.72	294	18.89	0	1556
	1996	35	2.47	21	1.48	77	5.43	571	40.30	434	30.63	278	19.62	1	1417
	1997	40	2.86	10	0.71	81	5.79	585	41.79	413	29.50	268	19.14	3	1400
	1998	28	2.15	15	1.15	76	5.84	544	41.78	392	30.11	274	21.04	0	1302
	1999	35	2.73	17	1.33	70	5.46	516	40.28	416	32.47	227	17.72	0	1281
	2000	33	2.83	21	1.80	92	7.90	442	37.94	385	33.06	192	16.48	0	1165
	2001	32	2.79	22	1.92	94	8.21	448	39.13	386	33.71	163	14.24	0	1145
USA	1994	1024	4.20	671	2.75	1825	7.49	9106	37.38	6141	25.21	5546	22.77	48	24361
	1995	913	3.99	645	2.82	1703	7.45	8241	36.05	5998	26.24	5351	23.41	9	22860
	1996	784	3.67	588	2.76	1656	7.76	7604	35.64	5588	26.19	5103	23.92	14	21337
	1997	747	3.76	518	2.61	1681	8.47	6912	34.82	5297	26.68	4691	23.63	5	19851
	1998	641	3.49	441	2.40	1548	8.43	6365	34.67	4937	26.89	4393	23.93	0	18361
	1999	605	3.45	439	2.50	1516	8.65	6078	34.67	4862	27.73	4028	22.98		17531
	2000	548	3.34	421	2.51	1623	9.90	5588	34.1	4661	25.00	3534	22.00	2	16377
	2001	544	3.40	387	2.42	1595	9.98	5630	35.21	4534	28.36	3295	20.61	4	15989

Section 4: Tuberculosis

Table 4-6. Tuberculosis Cases by Form of Disease, Miami-Dade County, Florida, and United States, 1994-2001

Aare	Year	Pulmonary		Extra Pulmonary		Both Pul & Extra Pul		Unknown	Total
		Cases	Percent	Cases	Percent	Cases	Percent		
Miami-Dade	1994	353	84.86	61	14.66	0	0.00	2	416
	1995	309	81.53	70	18.47	0	0.00	0	379
	1996	269	84.59	44	13.84	5	1.57	0	318
	1997	259	86.62	35	11.71	5	1.67	0	299
	1998	241	84.27	43	15.03	2	0.70	0	286
	1999	218	79.85	45	16.48	10	3.66	0	273
	2000	219	78.80	42	15.11	17	6.12	0	278
	2001	217	74.57	53	18.21	21	7.22	0	291
Florida	1994	1489	84.51	228	12.94	44	2.50	1	1762
	1995	1326	85.22	198	12.72	30	1.93	2	1556
	1996	1163	82.07	211	14.89	42	2.96	1	1417
	1997	1166	83.29	158	11.29	75	5.36	0	1400
	1998	1088	83.56	164	12.60	50	3.84	0	1302
	1999	1007	78.61	206	16.08	68	5.31	0	1281
	2000	917	78.71	177	15.19	67	5.75	4	1165
	2001	909	79.40	172	15.00	63	5.50	0	1145
USA	1994	18826	77.28	4265	17.51	1258	5.16	12	24361
	1995	17536	76.71	4132	18.08	1183	5.17	9	22860
	1996	16053	75.24	4142	19.41	1122	5.26	20	21337
	1997	14875	74.93	3554	17.90	1410	7.10	0	19851
	1998	13479	73.41	3541	19.29	1334	7.27	0	18361
	1999	12761	72.79	3438	19.61	1322	7.54	0	17531
	2000	11894	72.60	3220	19.70	1248	7.60	0	16377
	2001	11589	72.50	3212	20.10	1179	7.40	0	15989

Figure 4-1. Incidence of Reported Tuberculosis, Miami-Dade County, Florida and United States, 1990-2001

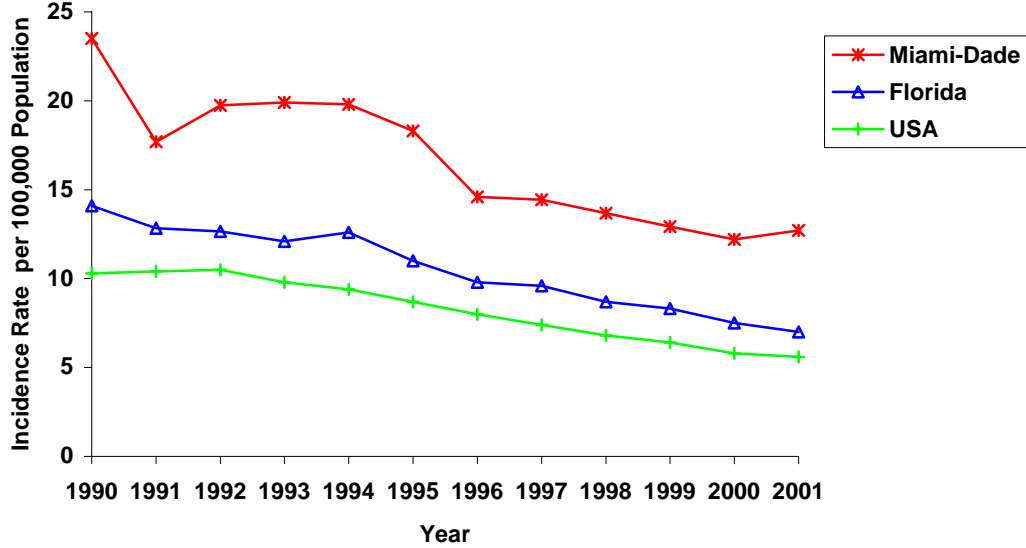
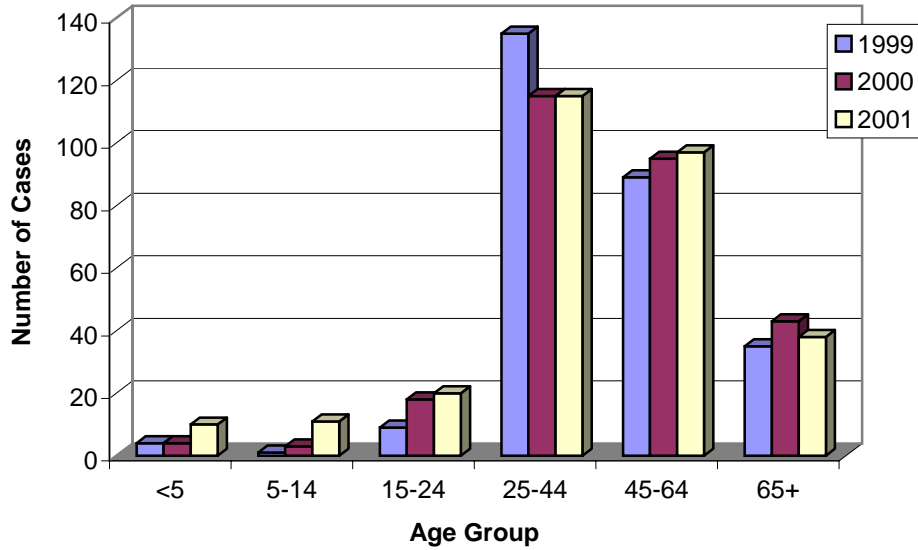
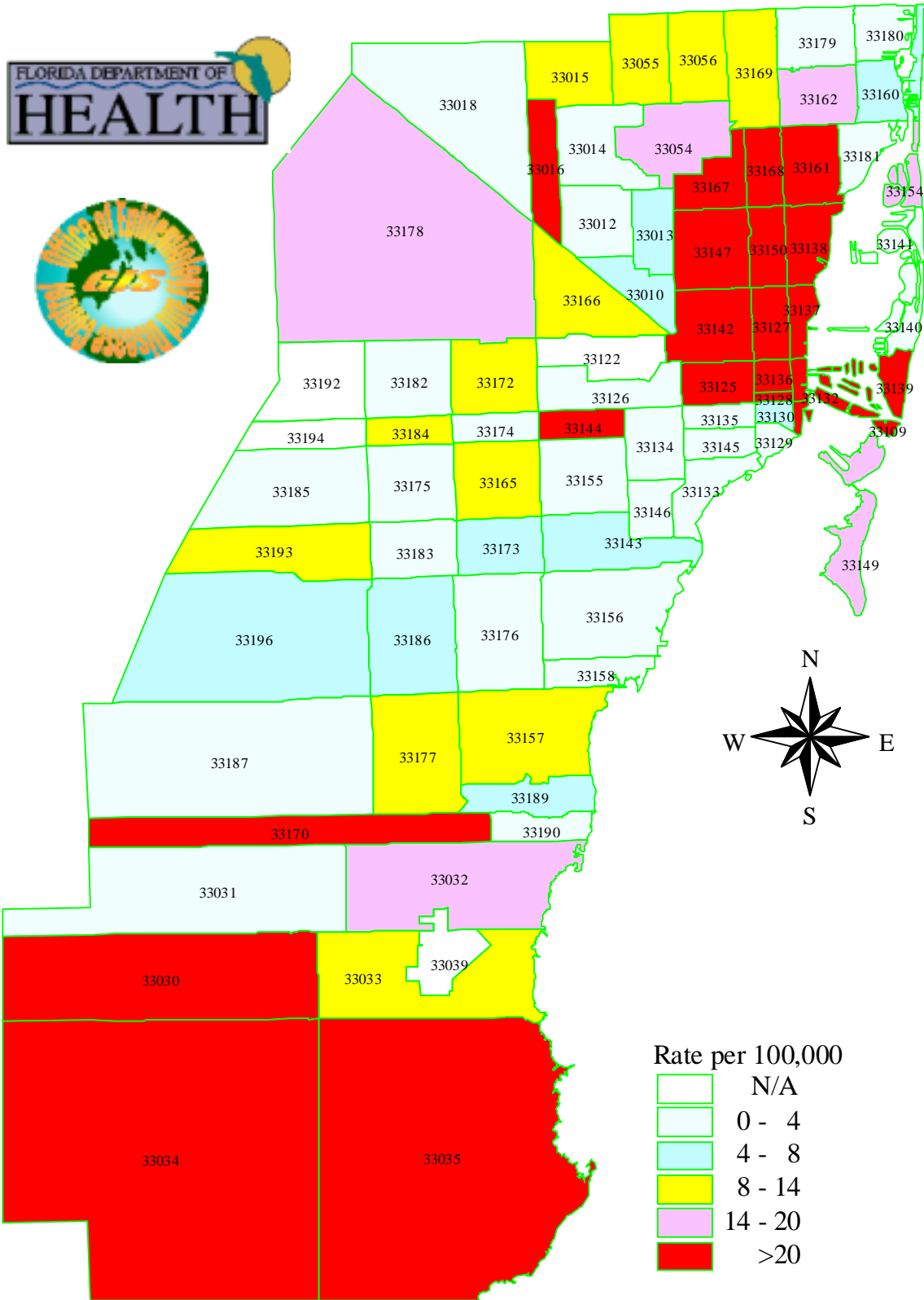


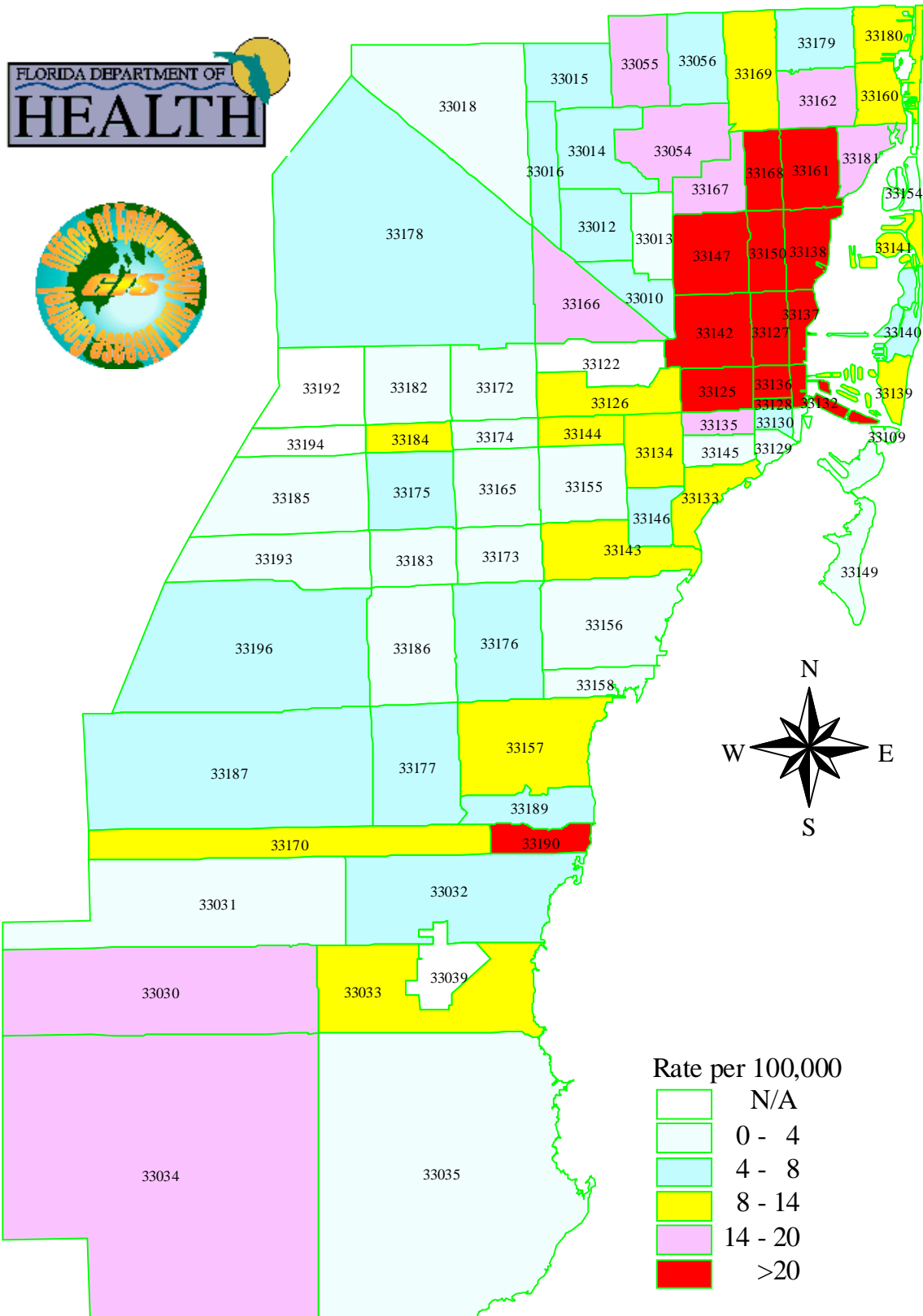
Figure 4-2. Reported TB Cases by Age Group Miami-Dade County, 1999-2001



Reported Cases of Tuberculosis per 100,000 Population
Miami-Dade County, 1999 (Countywide=12.9)



Reported Cases of Tuberculosis per 100,000 Population
Miami-Dade County, 2000 (Countywide=12.4)



Reported Cases of Tuberculosis per 100,000 Population
Miami-Dade County, 2001 (Countywide=12.7)

