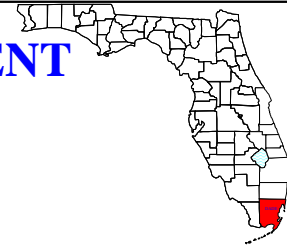




MIAMI-DADE COUNTY HEALTH DEPARTMENT

HIV/AIDS SURVEILLANCE

MONTHLY SURVEILLANCE REPORT



OCTOBER
2004

TABLES:

- Aids Cases by age group. AIDS Worksheet.
- Adult/Adolescent & Pediatric AIDS cases by race/ethnicity. AIDS Worksheet.
- Adult/Adolescent & Pediatric AIDS cases by mortality status. AIDS Worksheet.
- AIDS Cases by exposure category and sex among Adult/Adolescent and Pediatric. AIDS Worksheet.
- Adult/Adolescent AIDS cases by exposure category and race/ethnicity according to sex. AIDS Worksheet.
- Pediatric AIDS cases by exposure category and race/ethnicity. AIDS Worksheet.
- HIV (not AIDS) Cases by age group. HIV Worksheet.
- Adult/Adolescent & Pediatric HIV (not AIDS) cases by race/ethnicity. HIV Worksheet.
- Adult/Adolescent & Pediatric HIV (not AIDS) cases by mortality status. HIV Worksheet.
- HIV (not AIDS) Cases by exposure category and sex among Adult/Adolescent and Pediatric. HIV Worksheet.
- Adult/Adolescent HIV (not AIDS) cases by exposure category and race/ethnicity according to sex. HIV Worksheet.
- Pediatric HIV (not AIDS) cases by exposure category and race/ethnicity. HIV Worksheet.

CHARTS:

- Percent of AIDS cases by Age Group. AIDS CHARTS Worksheet.
- Percent of AIDS cases by Race/Ethnicity. AIDS CHARTS Worksheet.
- Percent of Adult/Adolescent AIDS cases by Exposure Category. AIDS CHARTS Worksheet.
- AIDS Mortality Rate. AIDS CHARTS Worksheet.
- Percent of HIV (not AIDS) cases by Age Group. HIV CHARTS Worksheet.
- Percent of HIV (not AIDS) cases by Race/Ethnicity. HIV CHARTS Worksheet.
- Percent of Adult/Adolescent HIV (not AIDS) cases by Exposure Category. HIV CHARTS Worksheet.
- HIV Mortality Rate. HIV CHARTS Worksheet.

Evelyn Ullah, BSN, MSW
Director HIV/AIDS Services
8600 NW 17th Street, Miami, FL 33126
(305) 470-6999
Evelyn_Ullah@doh.state.fl.us
www.dadehealth.org

HIV/AIDS Surveillance
(305) 470-6987

**Miami-Dade County Health Department
HIV/AIDS Surveillance
Cumulative Number of Reported AIDS Cases**

**OCTOBER
2004**

AIDS Cases by age group

AIDS Age Group	Cases	Percent
Under 5	395	1.42
5-12	102	0.37
13-19	162	0.58
20-29	3,902	14.04
30-39	11,054	39.78
40-49	7,735	27.84
50-59	3,015	10.85
60-64	753	2.71
65-69	393	1.41
>=70	275	0.99
Unknown	0	0.00
Total	27,786	100

Adult/Adolescent & Pediatric AIDS cases by race/ethnicity

AIDS by Race/ Ethnicity *	Adult/Adolescent		Pediatric		Total AIDS	
	Cases	Percent	Cases	Percent	Cases	Percent
Hispanic (All Races)	9,051	33.17	48	9.66	9,099	32.75
Am.Indian Alaska Native	6	0.02	0	0.00	6	0.02
Asian	2	0.01	0	0.00	2	0.01
Black or Afr.American	13,858	50.78	427	85.92	14,285	51.41
Native Hawaii/Pacific Is.	0	0.00	0	0.00	0	0.00
White	4,211	15.43	22	4.43	4,233	15.23
Legacy Asian	29	0.11	0	0.00	29	0.10
Multi-Race	132	0.48	0	0.00	132	0.48
Unknown	0	0.00	0	0.00	0	0.00
Total	27,289	100	497	100	27,786	100

Adult/Adolescent & Pediatric AIDS cases by mortality status

Mortality Status	Adult/Adolescent		Pediatric		Total AIDS	
	Cases	Percent	Cases	Percent	Cases	Percent
Alive	11,789	43.20	181	36.42	11,970	43.08
Deaths	15,500	56.80	316	63.58	15,816	56.92
Total	27,289	100	497	100	27,786	100

* This new category created by CDC, is to support the ability to record an ethnicity and multiple races for an individual, necessitated by new federal OMB guidelines for reporting race and ethnicity.

(Continue next Page)

**Miami-Dade County Health Department
HIV/AIDS Surveillance
Cumulative Number of Reported AIDS Cases**

AIDS Cases by exposure category and sex among Adult/Adolescent and Pediatric

Adult/Adolescent AIDS						
Adult/Adolescent Exposure Category	Male	Percent	Female	Percent	Total	Percent
Men who have sex with men	10,632	51.39	0	0.00	10,632	38.96
Injecting drug use	3,015	14.57	1,642	24.88	4,657	17.07
Men who have sex with men and inject drug	977	4.72	0	0.00	977	3.58
Hemophilia/coagulation disorder	53	0.26	7	0.11	60	0.22
Heterosexual contact	2,574	12.44	3,580	54.25	6,154	22.55
Recipient of blood, components, or tissue	105	0.51	96	1.45	201	0.74
Risk not reported or identified	3,334	16.11	1,274	19.31	4,608	16.89
Total	20,690	100	6,599	100	27,289	100

Pediatric AIDS						
Pediatric Exposure Category	Male	Percent	Female	Percent	Total	Percent
Hemophilia/coagulation disorder	0	0.00	0	0.00	0	0.00
Mother with/at risk for HIV infection	238	96.75	248	98.80	486	97.79
Recipient of blood, components, or tissue	5	2.03	2	0.80	7	1.41
Risk not reported or identified	3	1.22	1	0.40	4	0.80
Total	246	100	251	100	497	100

(Continue next Page)

**Miami-Dade County Health Department
HIV/AIDS Surveillance
Cumulative Number of Reported AIDS Cases**

Adult/Adolescent AIDS cases by exposure category and race/ethnicity according to sex

ADULT MALE																	
Exposure Category/ Race/Ethnicity	MSM		IDU		MSM & IDU		HEMOPH		HETROSEX		TRAN/OTHER		NIR		TOTAL		
	Cases	Percent	Cases	Percent	Cases	Percent	Cases	Percent	Cases	Percent	Cases	Percent	Cases	Percent	Cases	Percent	
Hispanic (All Races)	5,524	52.0	618	20.5	328	33.6	17	32.1	625	24.3	34	29.8	815	24.5	7,961	38.5	
Am.Indian Alaska Native	1	0.0	2	0.1	0	0.0	0	0.0	1	0.0	0	0.0	1	0.0	5	0.0	
Asian	0	0.0	0	0.0	0	0.0	0	0.0	2	0.1	0	0.0	0	0.0	2	0.0	
Black or Afr.American	2,054	19.3	2,112	70.0	422	43.2	15	28.3	1,827	71.0	49	43.0	2,299	69.1	8,778	42.4	
Native Hawaii/Pacific Is.	0	0.0	0	0.0	0	0.0	0	0.0	0	0.0	0	0.0	0	0.0	0	0.0	
White	2,987	28.1	272	9.0	222	22.7	20	37.7	105	4.1	29	25.4	198	6.0	3,833	18.5	
Legacy Asian	17	0.2	0	0.0	0	0.0	1	1.9	4	0.2	0	0.0	3	0.1	25	0.1	
Multi-Race	49	0.5	11	0.4	5	0.5	0	0.0	10	0.4	2	1.8	9	0.3	86	0.4	
Unknown	0	0.0	0	0.0	0	0.0	0	0.0	0	0.0	0	0.0	0	0.0	0	0.0	
Male Subtotal	10,632	100	3,015	100	977	100	53	100	2,574	100	114	100	3,325	100	20,690	100	

ADULT FEMALE																	
Exposure Category/ Race/Ethnicity	MSM		IDU		MSM & IDU		HEMOPHILIA		HETROSEX		TRAN/OTHER		NIR		TOTAL		
	Cases	Percent	Cases	Percent	Cases	Percent	Cases	Percent	Cases	Percent	Cases	Percent	Cases	Percent	Cases	Percent	
Hispanic (All Races)	0	0	164	10.0	0	0	1	14.3	723	20.2	23	21.1	179	14.2	1,090	16.5	
Am.Indian Alaska Native	0	0	1	0.1	0	0	0	0.0	0	0.0	0	0.0	0	0.0	1	0.0	
Asian	0	0	0	0.0	0	0	0	0.0	0	0.0	0	0.0	0	0.0	0	0.0	
Black or Afr.American	0	0	1,299	79.1	0	0	5	71.4	2,687	75.1	70	64.2	1,019	80.8	5,080	77.0	
Native Hawaii/Pacific Is.	0	0	0	0.0	0	0	0	0.0	0	0.0	0	0.0	0	0.0	0	0.0	
White	0	0	170	10.4	0	0	1	14.3	142	4.0	12	11.0	53	4.2	378	5.7	
Legacy Asian	0	0	1	0.1	0	0	0	0.0	2	0.1	1	0.9	0	0.0	4	0.1	
Multi-Race	0	0	7	0.4	0	0	0	0.0	26	0.7	3	2.8	10	0.8	46	0.7	
Unknown	0	0	0	0.0	0	0	0	0.0	0	0.0	0	0.0	0	0.0	0	0.0	
Female Subtotal	0	0	1,642	100	0	0	7	100	3,580	100	109	100	1,261	100	6,599	100	

ADULT TOTAL		10,632		4,657		977		60		6,154		223		4,586		27,289	
--------------------	--	--------	--	-------	--	-----	--	----	--	-------	--	-----	--	-------	--	--------	--

(Continue next Page)

**Miami-Dade County Health Department
HIV/AIDS Surveillance
Cumulative Number of Reported AIDS Cases**

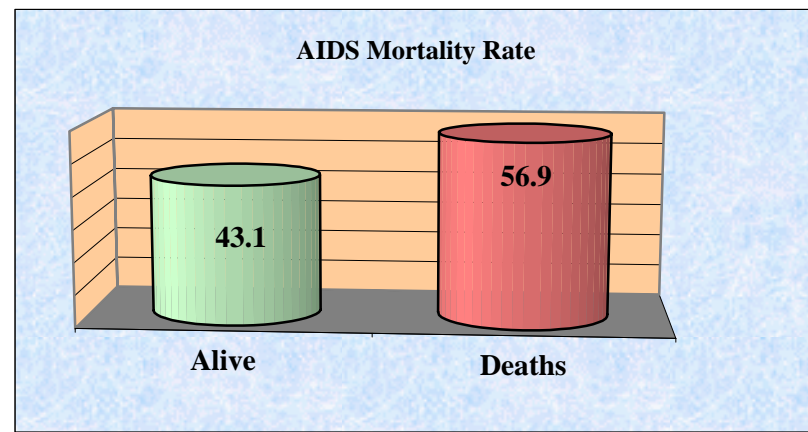
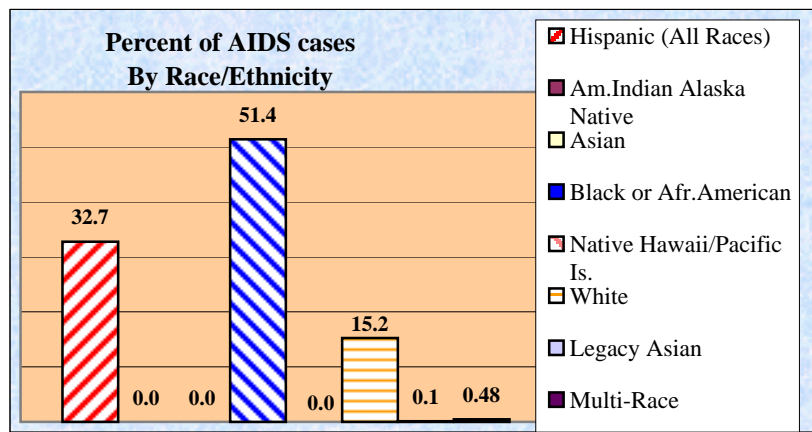
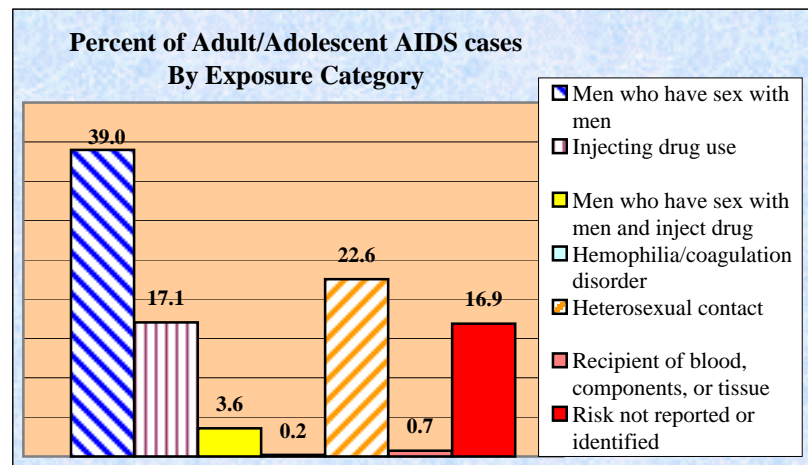
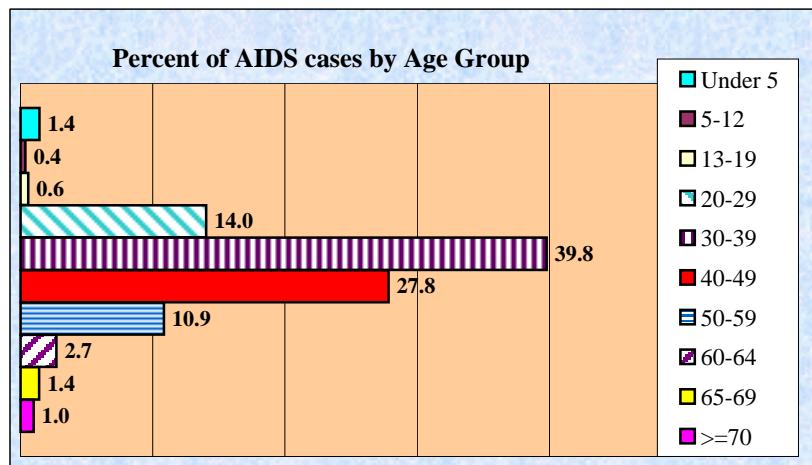
Pediatric AIDS cases by exposure category and race/ethnicity

PEDIATRIC										
Exposure Category/ Race/Ethnicity	HEMOPHILIA		Mother w/HIV		RECEIPT BLOOD		PED. NIR		TOTAL	
	Cases	Percent	Cases	Percent	Cases	Percent	Cases	Percent	Cases	Percent
Hispanic (All Races)	0	0.0	40	8.2	5	71.4	3	75.0	48	9.7
Am.Indian Alaska Native	0	0.0	0	0.0	0	0.0	0	0.0	0	0.0
Asian	0	0.0	0	0.0	0	0.0	0	0.0	0	0.0
Black or Afr.American	0	0.0	424	87.2	2	28.6	1	25.0	427	85.9
Native Hawaii/Pacific Is.	0	0.0	0	0.0	0	0.0	0	0.0	0	0.0
White	0	0.0	22	4.5	0	0.0	0	0.0	22	4.4
Legacy Asian	0	0.0	0	0.0	0	0.0	0	0.0	0	0.0
Multi-Race	0	0.0	0	0.0	0	0.0	0	0.0	0	0.0
Unknown	0	0.0	0	0.0	0	0.0	0	0.0	0	0.0
Total Pediatrics	0	0	486	100	7	100	4	100	497	100

NOTE:

All data at the local level is considered provisional and subject to edit checks by state and federal agencies.
Adjustment are performed on a monthly basis to compensate for duplicate reports state wide and case validation projects.

MIAMI-DADE COUNTY AIDS CASES UP TO DATE



**Miami-Dade County Health Department
HIV/AIDS Surveillance
Cumulative Number of Reported HIV (not AIDS) Cases**

**OCTOBER
2004**

HIV (not AIDS) Cases by age group

HIV Age Group	Cases	Percent
Under 5	72	0.72
5-12	46	0.46
13-19	295	2.95
20-29	2,065	20.64
30-39	3,740	37.38
40-49	2,471	24.70
50-59	912	9.11
60-64	195	1.95
65-69	121	1.21
>=70	89	0.89
Unknown	0	0.00
Total	10,006	100

Adult/Adolescent & Pediatric HIV (not AIDS) cases by race/ethnicity

HIV by Race/ Ethnicity *	Adult/Adolescent		Pediatric		Total HIV	
	Cases	Percent	Cases	Percent	Cases	Percent
Hispanic (All Races)	3,313	33.51	16	13.56	3,329	33.27
Am.Indian Alaska Native	5	0.05	0	0.00	5	0.05
Asian	3	0.03	0	0.00	3	0.03
Black or Afr.American	5,137	51.95	99	83.90	5,236	52.33
Native Hawaii/Pacific Is.	1	0.01	0	0.00	1	0.01
White	1,375	13.91	2	1.69	1,377	13.76
Legacy Asian	11	0.11	1	0.85	12	0.12
Multi-Race	43	0.43	0	0.00	43	0.43
Unknown	0	0.00	0	0.00	0	0.00
Total	9,888	100	118	100	10,006	100

Adult/Adolescent & Pediatric HIV (not AIDS) cases by mortality status

Mortality Status	Adult/Adolescent		Pediatric		Total HIV	
	Cases	Percent	Cases	Percent	Cases	Percent
Alive	9,627	97.36	118	100.00	9,745	97.39
Deaths	261	2.64	0	0.00	261	2.61
Total	9,888	100	118	100	10,006	100

* This new category created by CDC, is to support the ability to record an ethnicity and multiple races for an individual, necessitated by new federal OMB guidelines for reporting race and ethnicity.

(Continue next Page)

**Miami-Dade County Health Department
HIV/AIDS Surveillance
Cumulative Number of Reported HIV (not AIDS) Cases**

HIV (not AIDS) Cases by exposure category and sex among Adult/Adolescent and Pediatric

Adult/Adolescent HIV						
Adult/Adolescent Exposure Category	Male	Percent	Female	Percent	Total	Percent
Men who have sex with men	3,182	47.04	0	0.00	3,182	32.18
Injecting drug use	328	4.85	235	7.52	563	5.69
Men who have sex with men and inject drug	132	1.95	0	0.00	132	1.33
Hemophilia/coagulation disorder	5	0.07	2	0.06	7	0.07
Heterosexual contact	1,101	16.28	1,810	57.94	2,911	29.44
Recipient of blood, components, or tissue	1	0.01	1	0.03	2	0.02
Risk not reported or identified	2,015	29.79	1,076	34.44	3,091	31.26
Total	6,764	100	3,124	100	9,888	100

Pediatric HIV						
Pediatric Exposure Category	Male	Percent	Female	Percent	Total	Percent
Hemophilia/coagulation disorder	0	0.00	0	0.00	0	0.00
Mother with/at risk for HIV infection	46	100.00	66	91.67	112	94.92
Recipient of blood, components, or tissue	0	0.00	2	2.78	2	1.69
Risk not reported or identified	0	0.00	4	5.56	4	3.39
Total	46	100	72	100	118	100

(Continue next Page)

**Miami-Dade County Health Department
HIV/AIDS Surveillance
Cumulative Number of Reported HIV (not AIDS) Cases**

Adult/Adolescent HIV (not AIDS) cases by exposure category and race/ethnicity according to sex

ADULT MALE																	
Exposure Category/ Race/Ethnicity	MSM		IDU		MSM & IDU		HEMOPH		HETROSEX		TRAN/OTHER		NIR		TOTAL		
	Cases	Percent	Cases	Percent	Cases	Percent	Cases	Percent	Cases	Percent	Cases	Percent	Cases	Percent	Cases	Percent	
Hispanic (All Races)	1,686	53.0	99	30.2	44	33.3	2	40.0	239	21.7	1	100.0	624	31.0	2,695	39.8	
Am.Indian Alaska Native	2	0.1	0	0.0	0	0.0	0	0.0	0	0.0	0	0.0	0	0.0	2	0.0	
Asian	2	0.1	0	0.0	0	0.0	0	0.0	0	0.0	0	0.0	1	0.0	3	0.0	
Black or Afr.American	607	19.1	190	57.9	48	36.4	3	60.0	819	74.4	0	0.0	1,170	58.1	2,837	41.9	
Native Hawaii/Pacific Is.	0	0.0	0	0.0	0	0.0	0	0.0	0	0.0	0	0.0	1	0.0	1	0.0	
White	870	27.3	38	11.6	37	28.0	0	0.0	38	3.5	0	0.0	213	10.6	1,196	17.7	
Legacy Asian	6	0.2	0	0.0	0	0.0	0	0.0	1	0.1	0	0.0	2	0.1	9	0.1	
Multi-Race	9	0.3	1	0.3	3	2.3	0	0.0	4	0.4	0	0.0	4	0.2	21	0.3	
Unknown	0	0.0	0	0.0	0	0.0	0	0.0	0	0.0	0	0.0	0	0.0	0	0.0	
Male Subtotal	3,182	100	328	100	132	100	5	100	1,101	100	1	100	2,015	100	6,764	100	

ADULT FEMALE																	
Exposure Category/ Race/Ethnicity	MSM		IDU		MSM & IDU		HEMOPHILIA		HETROSEX		TRAN/OTHER		NIR		TOTAL		
	Cases	Percent	Cases	Percent	Cases	Percent	Cases	Percent	Cases	Percent	Cases	Percent	Cases	Percent	Cases	Percent	
Hispanic (All Races)	0	0	44	18.7	0	0	0	0.0	368	20.3	1	0	205	19.1	618	19.8	
Am.Indian Alaska Native	0	0	1	0.4	0	0	0	0.0	2	0.1	0	0	0	0.0	3	0.1	
Asian	0	0	0	0.0	0	0	0	0.0	0	0.0	0	0	0	0.0	0	0.0	
Black or Afr.American	0	0	151	64.3	0	0	2	100.0	1,345	74.3	0	0	802	74.5	2,300	73.6	
Native Hawaii/Pacific Is.	0	0	0	0.0	0	0	0	0.0	0	0.0	0	0	0	0.0	0	0.0	
White	0	0	33	14.0	0	0	0	0.0	82	4.5	0	0	64	5.9	179	5.7	
Legacy Asian	0	0	0	0.0	0	0	0	0.0	1	0.1	0	0	1	0.1	2	0.1	
Multi-Race	0	0	6	2.6	0	0	0	0.0	12	0.7	0	0	4	0.4	22	0.7	
Unknown	0	0	0	0.0	0	0	0	0.0	0	0.0	0	0	0	0.0	0	0.0	
Female Subtotal	0	0	235	100	0	0	2	100	1,810	100	1	0	1,076	100	3,124	100	

ADULT TOTAL	3,182	563	132	7	2,911	2	3,091	9,888
--------------------	--------------	------------	------------	----------	--------------	----------	--------------	--------------

(Continue next Page)

**Miami-Dade County Health Department
HIV/AIDS Surveillance
Cumulative Number of Reported HIV (not AIDS) Cases**

Pediatric HIV (not AIDS) cases by exposure category and race/ethnicity

PEDIATRIC										
Exposure Category/ Race/Ethnicity	HEMOPHILIA		Mother w/HIV		RECEIPT BLOOD		PED. NIR		TOTAL	
	Cases	Percent	Cases	Percent	Cases	Percent	Cases	Percent	Cases	Percent
Hispanic (All Races)	0	0.0	13	11.6	2	100.0	1	25.0	16	13.6
Am.Indian Alaska Native	0	0.0	0	0.0	0	0.0	0	0.0	0	0.0
Asian	0	0.0	0	0.0	0	0.0	0	0.0	0	0.0
Black or Afr.American	0	0.0	96	85.7	0	0.0	3	75.0	99	83.9
Native Hawaii/Pacific Is.	0	0.0	0	0.0	0	0.0	0	0.0	0	0.0
White	0	0.0	2	1.8	0	0.0	0	0.0	2	1.7
Legacy Asian	0	0.0	1	0.9	0	0.0	0	0.0	1	0.8
Multi-Race	0	0.0	0	0.0	0	0.0	0	0.0	0	0.0
Unknown	0	0.0	0	0.0	0	0.0	0	0.0	0	0.0
Total Pediatrics	0	0	112	100	2	100	4	100	118	100

NOTE:

All data at the local level is considered provisional and subject to edit checks by state and federal agencies.

Adjustment are performed on a monthly basis to compensate for duplicate reports state wide and case validation projects.

MIAMI-DADE COUNTY HIV (not AIDS) CASES UP TO DATE

