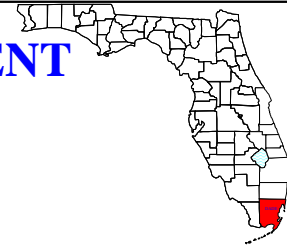




# MIAMI-DADE COUNTY HEALTH DEPARTMENT

## HIV/AIDS SURVEILLANCE

### MONTHLY SURVEILLANCE REPORT



**SEPTEMBER**  
**2004**

**TABLES:**

- Aids Cases by age group. AIDS Worksheet.
- Adult/Adolescent & Pediatric AIDS cases by race/ethnicity. AIDS Worksheet.
- Adult/Adolescent & Pediatric AIDS cases by mortality status. AIDS Worksheet.
- AIDS Cases by exposure category and sex among Adult/Adolescent and Pediatric. AIDS Worksheet.
- Adult/Adolescent AIDS cases by exposure category and race/ethnicity according to sex. AIDS Worksheet.
- Pediatric AIDS cases by exposure category and race/ethnicity. AIDS Worksheet.
- HIV (not AIDS) Cases by age group. HIV Worksheet.
- Adult/Adolescent & Pediatric HIV (not AIDS) cases by race/ethnicity. HIV Worksheet.
- Adult/Adolescent & Pediatric HIV (not AIDS) cases by mortality status. HIV Worksheet.
- HIV (not AIDS) Cases by exposure category and sex among Adult/Adolescent and Pediatric. HIV Worksheet.
- Adult/Adolescent HIV (not AIDS) cases by exposure category and race/ethnicity according to sex. HIV Worksheet.
- Pediatric HIV (not AIDS) cases by exposure category and race/ethnicity. HIV Worksheet.

**CHARTS:**

- Percent of AIDS cases by Age Group. AIDS CHARTS Worksheet.
- Percent of AIDS cases by Race/Ethnicity. AIDS CHARTS Worksheet.
- Percent of Adult/Adolescent AIDS cases by Exposure Category. AIDS CHARTS Worksheet.
- AIDS Mortality Rate. AIDS CHARTS Worksheet.
- Percent of HIV (not AIDS) cases by Age Group. HIV CHARTS Worksheet.
- Percent of HIV (not AIDS) cases by Race/Ethnicity. HIV CHARTS Worksheet.
- Percent of Adult/Adolescent HIV (not AIDS) cases by Exposure Category. HIV CHARTS Worksheet.
- HIV Mortality Rate. HIV CHARTS Worksheet.

---

Evelyn Ullah, BSN, MSW  
Director HIV/AIDS Services  
8600 NW 17th Street, Miami, FL 33126  
(305) 470-6999  
Evelyn\_Ullah@doh.state.fl.us  
www.dadehealth.org

HIV/AIDS Surveillance  
(305) 470-6987

**Miami-Dade County Health Department  
HIV/AIDS Surveillance  
Cumulative Number of Reported AIDS Cases**

**SEPTEMBER  
2004**

*AIDS Cases by age group*

AIDS Age Group	Cases	Percent
Under 5	395	1.42
5-12	102	0.37
13-19	161	0.58
20-29	3,894	14.04
30-39	11,045	39.83
40-49	7,715	27.82
50-59	3,005	10.84
60-64	748	2.70
65-69	391	1.41
>=70	274	0.99
Unknown	0	0.00
<b>Total</b>	<b>27,730</b>	<b>100</b>

*The Florida Bureau of HIV/AIDS Surveillance Section participated in a national case de-duplication project to determine the extent of case duplication between states through the end of 2001. Of the approximately 19,000 Florida records reviewed, 4,197 were determined to be duplicates because the cases were diagnosed and reported in another state prior to being diagnosed in Florida. These cases have been deleted from Florida's case registry. This has resulted in decreases throughout this report.*

*Adult/Adolescent & Pediatric AIDS cases by race/ethnicity*

AIDS by Race/ Ethnicity *	Adult/Adolescent		Pediatric		Total AIDS	
	Cases	Percent	Cases	Percent	Cases	Percent
Hispanic (All Races)	9,028	33.15	48	9.66	9,076	32.73
Am.Indian Alaska Native	5	0.02	0	0.00	5	0.02
Asian	2	0.01	0	0.00	2	0.01
Black or Afr.American	13,824	50.76	427	85.92	14,251	51.39
Native Hawaii/Pacific Is.	0	0.00	0	0.00	0	0.00
White	4,214	15.47	22	4.43	4,236	15.28
Legacy Asian	29	0.11	0	0.00	29	0.10
Multi-Race	131	0.48	0	0.00	131	0.47
Unknown	0	0.00	0	0.00	0	0.00
<b>Total</b>	<b>27,233</b>	<b>100</b>	<b>497</b>	<b>100</b>	<b>27,730</b>	<b>100</b>

*Adult/Adolescent & Pediatric AIDS cases by mortality status*

Mortality Status	Adult/Adolescent		Pediatric		Total AIDS	
	Cases	Percent	Cases	Percent	Cases	Percent
Alive	11,766	43.20	181	36.42	11,947	43.08
Deaths	15,467	56.80	316	63.58	15,783	56.92
<b>Total</b>	<b>27,233</b>	<b>100</b>	<b>497</b>	<b>100</b>	<b>27,730</b>	<b>100</b>

\* This new category created by CDC, is to support the ability to record an ethnicity and multiple races for an individual, necessitated by new federal OMB guidelines for reporting race and ethnicity.

(Continue next Page)

**Miami-Dade County Health Department  
HIV/AIDS Surveillance  
Cumulative Number of Reported AIDS Cases**

*AIDS Cases by exposure category and sex among Adult/Adolescent and Pediatric*

<b>Adult/Adolescent AIDS</b>						
<b>Adult/Adolescent Exposure Category</b>	<b>Male</b>	<b>Percent</b>	<b>Female</b>	<b>Percent</b>	<b>Total</b>	<b>Percent</b>
Men who have sex with men	10,595	51.30	0	0.00	10,595	38.91
Injecting drug use	3,004	14.54	1,630	24.78	4,634	17.02
Men who have sex with men and inject drug	973	4.71	0	0.00	973	3.57
Hemophilia/coagulation disorder	53	0.26	7	0.11	60	0.22
Heterosexual contact	2,561	12.40	3,539	53.79	6,100	22.40
Recipient of blood, components, or tissue	105	0.51	97	1.47	202	0.74
Risk not reported or identified	3,363	16.28	1,306	19.85	4,669	17.14
<b>Total</b>	<b>20,654</b>	<b>100</b>	<b>6,579</b>	<b>100</b>	<b>27,233</b>	<b>100</b>

<b>Pediatric AIDS</b>						
<b>Pediatric Exposure Category</b>	<b>Male</b>	<b>Percent</b>	<b>Female</b>	<b>Percent</b>	<b>Total</b>	<b>Percent</b>
Hemophilia/coagulation disorder	0	0.00	0	0.00	0	0.00
Mother with/at risk for HIV infection	238	96.75	248	98.80	486	97.79
Recipient of blood, components, or tissue	5	2.03	2	0.80	7	1.41
Risk not reported or identified	3	1.22	1	0.40	4	0.80
<b>Total</b>	<b>246</b>	<b>100</b>	<b>251</b>	<b>100</b>	<b>497</b>	<b>100</b>

(Continue next Page)

**Miami-Dade County Health Department  
HIV/AIDS Surveillance  
Cumulative Number of Reported AIDS Cases**

*Adult/Adolescent AIDS cases by exposure category and race/ethnicity according to sex*

<b>ADULT MALE</b>																
Exposure Category/ Race/Ethnicity	MSM		IDU		MSM & IDU		HEMOPH		HETROSEX		TRAN/OTHER		NIR		TOTAL	
	Cases	Percent	Cases	Percent	Cases	Percent	Cases	Percent	Cases	Percent	Cases	Percent	Cases	Percent	Cases	Percent
Hispanic (All Races)	5,504	51.9	617	20.5	326	33.5	17	32.1	620	24.2	34	29.8	822	24.5	7,940	38.4
Am.Indian Alaska Native	1	0.0	2	0.1	0	0.0	0	0.0	0	0.0	0	0.0	1	0.0	4	0.0
Asian	0	0.0	0	0.0	0	0.0	0	0.0	2	0.1	0	0.0	0	0.0	2	0.0
Black or Afr.American	2,039	19.2	2,103	70.0	419	43.1	15	28.3	1,817	70.9	49	43.0	2,321	69.2	8,763	42.4
Native Hawaii/Pacific Is.	0	0.0	0	0.0	0	0.0	0	0.0	0	0.0	0	0.0	0	0.0	0	0.0
White	2,985	28.2	272	9.1	223	22.9	20	37.7	108	4.2	29	25.4	198	5.9	3,835	18.6
Legacy Asian	17	0.2	0	0.0	0	0.0	1	1.9	4	0.2	0	0.0	3	0.1	25	0.1
Multi-Race	49	0.5	10	0.3	5	0.5	0	0.0	10	0.4	2	1.8	9	0.3	85	0.4
Unknown	0	0.0	0	0.0	0	0.0	0	0.0	0	0.0	0	0.0	0	0.0	0	0.0
<b>Male Subtotal</b>	<b>10,595</b>	<b>100</b>	<b>3,004</b>	<b>100</b>	<b>973</b>	<b>100</b>	<b>53</b>	<b>100</b>	<b>2,561</b>	<b>100</b>	<b>114</b>	<b>100</b>	<b>3,354</b>	<b>100</b>	<b>20,654</b>	<b>100</b>

<b>ADULT FEMALE</b>																
Exposure Category/ Race/Ethnicity	MSM		IDU		MSM & IDU		HEMOPHILIA		HETROSEX		TRAN/OTHER		NIR		TOTAL	
	Cases	Percent	Cases	Percent	Cases	Percent	Cases	Percent	Cases	Percent	Cases	Percent	Cases	Percent	Cases	Percent
Hispanic (All Races)	0	0	163	10.0	0	0	1	14.3	714	20.2	23	21.1	187	14.5	1,088	16.5
Am.Indian Alaska Native	0	0	1	0.1	0	0	0	0.0	0	0.0	0	0.0	0	0.0	1	0.0
Asian	0	0	0	0.0	0	0	0	0.0	0	0.0	0	0.0	0	0.0	0	0.0
Black or Afr.American	0	0	1,288	79.0	0	0	5	71.4	2,657	75.1	70	64.2	1,041	80.4	5,061	76.9
Native Hawaii/Pacific Is.	0	0	0	0.0	0	0	0	0.0	0	0.0	0	0.0	0	0.0	0	0.0
White	0	0	170	10.4	0	0	1	14.3	141	4.0	12	11.0	55	4.3	379	5.8
Legacy Asian	0	0	1	0.1	0	0	0	0.0	2	0.1	1	0.9	0	0.0	4	0.1
Multi-Race	0	0	7	0.4	0	0	0	0.0	25	0.7	3	2.8	11	0.9	46	0.7
Unknown	0	0	0	0.0	0	0	0	0.0	0	0.0	0	0.0	0	0.0	0	0.0
<b>Female Subtotal</b>	<b>0</b>	<b>0</b>	<b>1,630</b>	<b>100</b>	<b>0</b>	<b>0</b>	<b>7</b>	<b>100</b>	<b>3,539</b>	<b>100</b>	<b>109</b>	<b>100</b>	<b>1,294</b>	<b>100</b>	<b>6,579</b>	<b>100</b>

<b>ADULT TOTAL</b>	<b>10,595</b>		<b>4,634</b>		<b>973</b>		<b>60</b>		<b>6,100</b>		<b>223</b>		<b>4,648</b>		<b>27,233</b>	
--------------------	---------------	--	--------------	--	------------	--	-----------	--	--------------	--	------------	--	--------------	--	---------------	--

(Continue next Page)

**Miami-Dade County Health Department  
HIV/AIDS Surveillance  
Cumulative Number of Reported AIDS Cases**

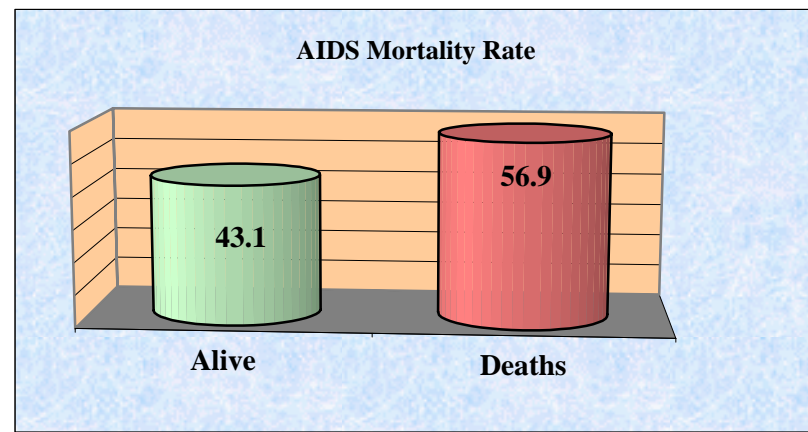
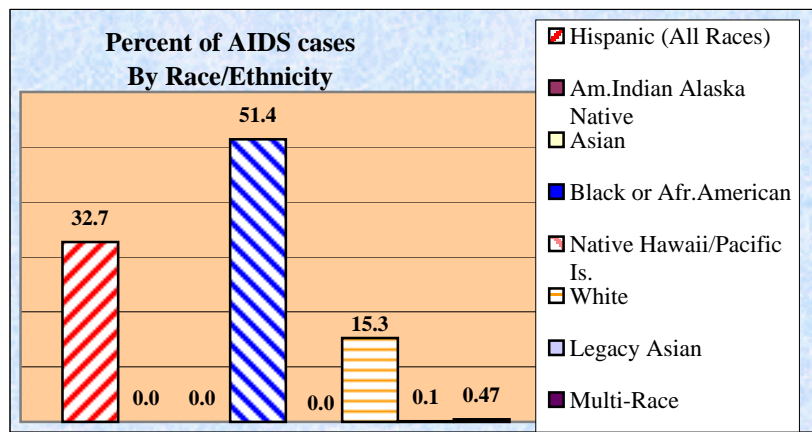
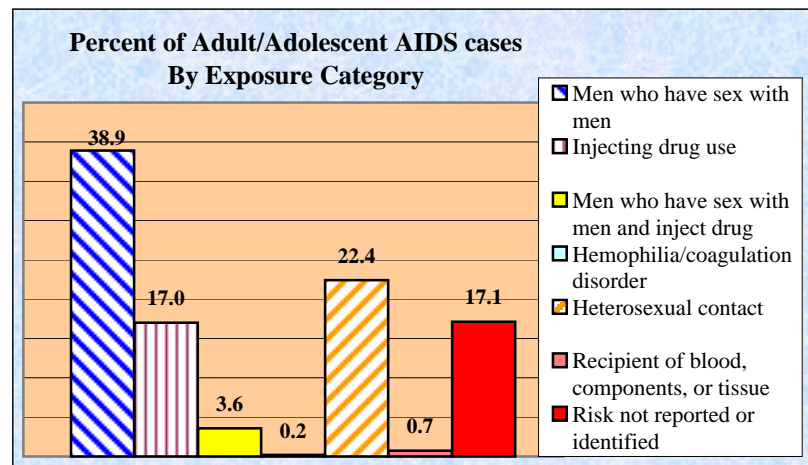
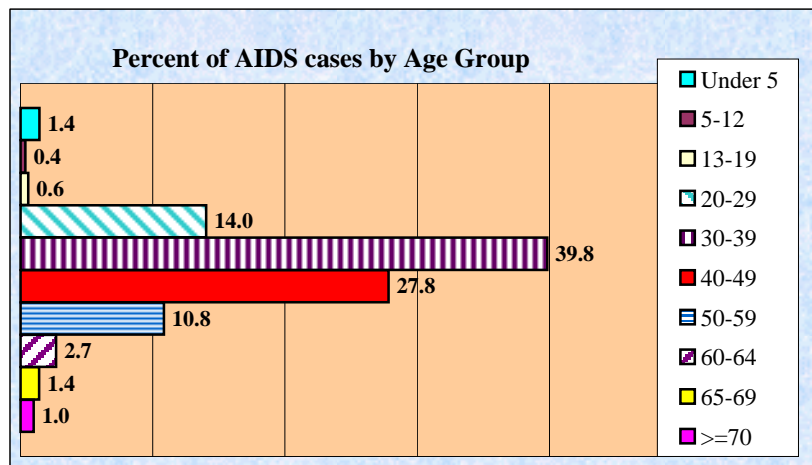
*Pediatric AIDS cases by exposure category and race/ethnicity*

<b>PEDIATRIC</b>										
<b>Exposure Category/ Race/Ethnicity</b>	<b>HEMOPHILIA</b>		<b>Mother w/HIV</b>		<b>RECEIPT BLOOD</b>		<b>PED. NIR</b>		<b>TOTAL</b>	
	<b>Cases</b>	<b>Percent</b>	<b>Cases</b>	<b>Percent</b>	<b>Cases</b>	<b>Percent</b>	<b>Cases</b>	<b>Percent</b>	<b>Cases</b>	<b>Percent</b>
Hispanic (All Races)	0	0.0	40	8.2	5	71.4	3	75.0	48	9.7
Am.Indian Alaska Native	0	0.0	0	0.0	0	0.0	0	0.0	0	0.0
Asian	0	0.0	0	0.0	0	0.0	0	0.0	0	0.0
Black or Afr.American	0	0.0	424	87.2	2	28.6	1	25.0	427	85.9
Native Hawaii/Pacific Is.	0	0.0	0	0.0	0	0.0	0	0.0	0	0.0
White	0	0.0	22	4.5	0	0.0	0	0.0	22	4.4
Legacy Asian	0	0.0	0	0.0	0	0.0	0	0.0	0	0.0
Multi-Race	0	0.0	0	0.0	0	0.0	0	0.0	0	0.0
Unknown	0	0.0	0	0.0	0	0.0	0	0.0	0	0.0
<b>Total Pediatrics</b>	<b>0</b>	<b>0</b>	<b>486</b>	<b>100</b>	<b>7</b>	<b>100</b>	<b>4</b>	<b>100</b>	<b>497</b>	<b>100</b>

**NOTE:**

All data at the local level is considered provisional and subject to edit checks by state and federal agencies.  
Adjustment are performed on a monthly basis to compensate for duplicate reports state wide and case validation projects.

## MIAMI-DADE COUNTY AIDS CASES UP TO DATE



**Miami-Dade County Health Department  
HIV/AIDS Surveillance  
Cumulative Number of Reported HIV (not AIDS) Cases**

**SEPTEMBER  
2004**

*HIV (not AIDS) Cases by age group*

HIV Age Group	Cases	Percent
Under 5	72	0.72
5-12	46	0.46
13-19	291	2.92
20-29	2,059	20.69
30-39	3,721	37.38
40-49	2,455	24.66
50-59	899	9.03
60-64	198	1.99
65-69	122	1.23
>=70	91	0.91
Unknown	0	0.00
<b>Total</b>	<b>9,954</b>	<b>100</b>

*The Florida Bureau of HIV/AIDS Surveillance Section participated in a national case de-duplication project to determine the extent of case duplication between states through the end of 2001. Of the approximately 19,000 Florida records reviewed, 4,197 were determined to be duplicates because the cases were diagnosed and reported in another state prior to being diagnosed in Florida. These cases have been deleted from Florida's case registry. This has resulted in decreases throughout this report.*

*Adult/Adolescent & Pediatric HIV (not AIDS) cases by race/ethnicity*

HIV by Race/ Ethnicity *	Adult/Adolescent		Pediatric		Total HIV	
	Cases	Percent	Cases	Percent	Cases	Percent
Hispanic (All Races)	3,285	33.40	16	13.56	3,301	33.16
Am.Indian Alaska Native	5	0.05	0	0.00	5	0.05
Asian	3	0.03	0	0.00	3	0.03
Black or Afr.American	5,118	52.03	99	83.90	5,217	52.41
Native Hawaii/Pacific Is.	1	0.01	0	0.00	1	0.01
White	1,371	13.94	2	1.69	1,373	13.79
Legacy Asian	11	0.11	1	0.85	12	0.12
Multi-Race	42	0.43	0	0.00	42	0.42
Unknown	0	0.00	0	0.00	0	0.00
<b>Total</b>	<b>9,836</b>	<b>100</b>	<b>118</b>	<b>100</b>	<b>9,954</b>	<b>100</b>

*Adult/Adolescent & Pediatric HIV (not AIDS) cases by mortality status*

Mortality Status	Adult/Adolescent		Pediatric		Total HIV	
	Cases	Percent	Cases	Percent	Cases	Percent
Alive	9,579	97.39	118	100.00	9,697	97.42
Deaths	257	2.61	0	0.00	257	2.58
<b>Total</b>	<b>9,836</b>	<b>100</b>	<b>118</b>	<b>100</b>	<b>9,954</b>	<b>100</b>

\* This new category created by CDC, is to support the ability to record an ethnicity and multiple races for an individual, necessitated by new federal OMB guidelines for reporting race and ethnicity.

(Continue next Page)

**Miami-Dade County Health Department  
HIV/AIDS Surveillance  
Cumulative Number of Reported HIV (not AIDS) Cases**

*HIV (not AIDS) Cases by exposure category and sex among Adult/Adolescent and Pediatric*

<b>Adult/Adolescent HIV</b>						
<b>Adult/Adolescent Exposure Category</b>	<b>Male</b>	<b>Percent</b>	<b>Female</b>	<b>Percent</b>	<b>Total</b>	<b>Percent</b>
Men who have sex with men	3,142	46.78	0	0.00	3,142	31.94
Injecting drug use	323	4.81	230	7.37	553	5.62
Men who have sex with men and inject drug	131	1.95	0	0.00	131	1.33
Hemophilia/coagulation disorder	5	0.07	2	0.06	7	0.07
Heterosexual contact	1,078	16.05	1,800	57.69	2,878	29.26
Recipient of blood, components, or tissue	1	0.01	1	0.03	2	0.02
Risk not reported or identified	2,036	30.32	1,087	34.84	3,123	31.75
<b>Total</b>	<b>6,716</b>	<b>100</b>	<b>3,120</b>	<b>100</b>	<b>9,836</b>	<b>100</b>

<b>Pediatric HIV</b>						
<b>Pediatric Exposure Category</b>	<b>Male</b>	<b>Percent</b>	<b>Female</b>	<b>Percent</b>	<b>Total</b>	<b>Percent</b>
Hemophilia/coagulation disorder	0	0.00	0	0.00	0	0.00
Mother with/at risk for HIV infection	45	100.00	67	91.78	112	94.92
Recipient of blood, components, or tissue	0	0.00	2	2.74	2	1.69
Risk not reported or identified	0	0.00	4	5.48	4	3.39
<b>Total</b>	<b>45</b>	<b>100</b>	<b>73</b>	<b>100</b>	<b>118</b>	<b>100</b>

(Continue next Page)

**Miami-Dade County Health Department  
HIV/AIDS Surveillance  
Cumulative Number of Reported HIV (not AIDS) Cases**

*Adult/Adolescent HIV (not AIDS) cases by exposure category and race/ethnicity according to sex*

<b>ADULT MALE</b>																	
Exposure Category/ Race/Ethnicity	MSM		IDU		MSM & IDU		HEMOPH		HETROSEX		TRAN/OTHER		NIR		TOTAL		
	Cases	Percent	Cases	Percent	Cases	Percent	Cases	Percent	Cases	Percent	Cases	Percent	Cases	Percent	Cases	Percent	
Hispanic (All Races)	1,662	52.9	99	30.7	44	33.6	2	40.0	232	21.5	1	100.0	630	30.9	2,670	39.8	
Am.Indian Alaska Native	2	0.1	0	0.0	0	0.0	0	0.0	0	0.0	0	0.0	0	0.0	2	0.0	
Asian	2	0.1	0	0.0	0	0.0	0	0.0	0	0.0	0	0.0	1	0.0	3	0.0	
Black or Afr.American	596	19.0	185	57.3	47	35.9	3	60.0	804	74.6	0	0.0	1,183	58.1	2,818	42.0	
Native Hawaii/Pacific Is.	0	0.0	0	0.0	0	0.0	0	0.0	0	0.0	0	0.0	1	0.0	1	0.0	
White	865	27.5	38	11.8	37	28.2	0	0.0	38	3.5	0	0.0	214	10.5	1,192	17.7	
Legacy Asian	6	0.2	0	0.0	0	0.0	0	0.0	1	0.1	0	0.0	2	0.1	9	0.1	
Multi-Race	9	0.3	1	0.3	3	2.3	0	0.0	3	0.3	0	0.0	5	0.2	21	0.3	
Unknown	0	0.0	0	0.0	0	0.0	0	0.0	0	0.0	0	0.0	0	0.0	0	0.0	
<b>Male Subtotal</b>	<b>3,142</b>	<b>100</b>	<b>323</b>	<b>100</b>	<b>131</b>	<b>100</b>	<b>5</b>	<b>100</b>	<b>1,078</b>	<b>100</b>	<b>1</b>	<b>100</b>	<b>2,036</b>	<b>100</b>	<b>6,716</b>	<b>100</b>	

<b>ADULT FEMALE</b>																	
Exposure Category/ Race/Ethnicity	MSM		IDU		MSM & IDU		HEMOPHILIA		HETROSEX		TRAN/OTHER		NIR		TOTAL		
	Cases	Percent	Cases	Percent	Cases	Percent	Cases	Percent	Cases	Percent	Cases	Percent	Cases	Percent	Cases	Percent	
Hispanic (All Races)	0	0	42	18.3	0	0	0	0.0	368	20.4	1	0	204	18.8	615	19.7	
Am.Indian Alaska Native	0	0	1	0.4	0	0	0	0.0	2	0.1	0	0	0	0.0	3	0.1	
Asian	0	0	0	0.0	0	0	0	0.0	0	0.0	0	0	0	0.0	0	0.0	
Black or Afr.American	0	0	148	64.3	0	0	2	100.0	1,334	74.1	0	0	816	75.1	2,300	73.7	
Native Hawaii/Pacific Is.	0	0	0	0.0	0	0	0	0.0	0	0.0	0	0	0	0.0	0	0.0	
White	0	0	33	14.3	0	0	0	0.0	83	4.6	0	0	63	5.8	179	5.7	
Legacy Asian	0	0	0	0.0	0	0	0	0.0	1	0.1	0	0	1	0.1	2	0.1	
Multi-Race	0	0	6	2.6	0	0	0	0.0	12	0.7	0	0	3	0.3	21	0.7	
Unknown	0	0	0	0.0	0	0	0	0.0	0	0.0	0	0	0	0.0	0	0.0	
<b>Female Subtotal</b>	<b>0</b>	<b>0</b>	<b>230</b>	<b>100</b>	<b>0</b>	<b>0</b>	<b>2</b>	<b>100</b>	<b>1,800</b>	<b>100</b>	<b>1</b>	<b>0</b>	<b>1,087</b>	<b>100</b>	<b>3,120</b>	<b>100</b>	

<b>ADULT TOTAL</b>		3,142		553		131		7		2,878		2		3,123		9,836	
--------------------	--	-------	--	-----	--	-----	--	---	--	-------	--	---	--	-------	--	-------	--

(Continue next Page)

**Miami-Dade County Health Department  
HIV/AIDS Surveillance  
Cumulative Number of Reported HIV (not AIDS) Cases**

*Pediatric HIV (not AIDS) cases by exposure category and race/ethnicity*

<b>PEDIATRIC</b>										
<b>Exposure Category/ Race/Ethnicity</b>	<b>HEMOPHILIA</b>		<b>Mother w/HIV</b>		<b>RECEIPT BLOOD</b>		<b>PED. NIR</b>		<b>TOTAL</b>	
	<b>Cases</b>	<b>Percent</b>	<b>Cases</b>	<b>Percent</b>	<b>Cases</b>	<b>Percent</b>	<b>Cases</b>	<b>Percent</b>	<b>Cases</b>	<b>Percent</b>
Hispanic (All Races)	0	0.0	13	11.6	2	100.0	1	25.0	16	13.6
Am.Indian Alaska Native	0	0.0	0	0.0	0	0.0	0	0.0	0	0.0
Asian	0	0.0	0	0.0	0	0.0	0	0.0	0	0.0
Black or Afr.American	0	0.0	96	85.7	0	0.0	3	75.0	99	83.9
Native Hawaii/Pacific Is.	0	0.0	0	0.0	0	0.0	0	0.0	0	0.0
White	0	0.0	2	1.8	0	0.0	0	0.0	2	1.7
Legacy Asian	0	0.0	1	0.9	0	0.0	0	0.0	1	0.8
Multi-Race	0	0.0	0	0.0	0	0.0	0	0.0	0	0.0
Unknown	0	0.0	0	0.0	0	0.0	0	0.0	0	0.0
<b>Total Pediatrics</b>	<b>0</b>	<b>0</b>	<b>112</b>	<b>100</b>	<b>2</b>	<b>100</b>	<b>4</b>	<b>100</b>	<b>118</b>	<b>100</b>

**NOTE:**

All data at the local level is considered provisional and subject to edit checks by state and federal agencies.

Adjustment are performed on a monthly basis to compensate for duplicate reports state wide and case validation projects.

## MIAMI-DADE COUNTY HIV (not AIDS) CASES UP TO DATE

